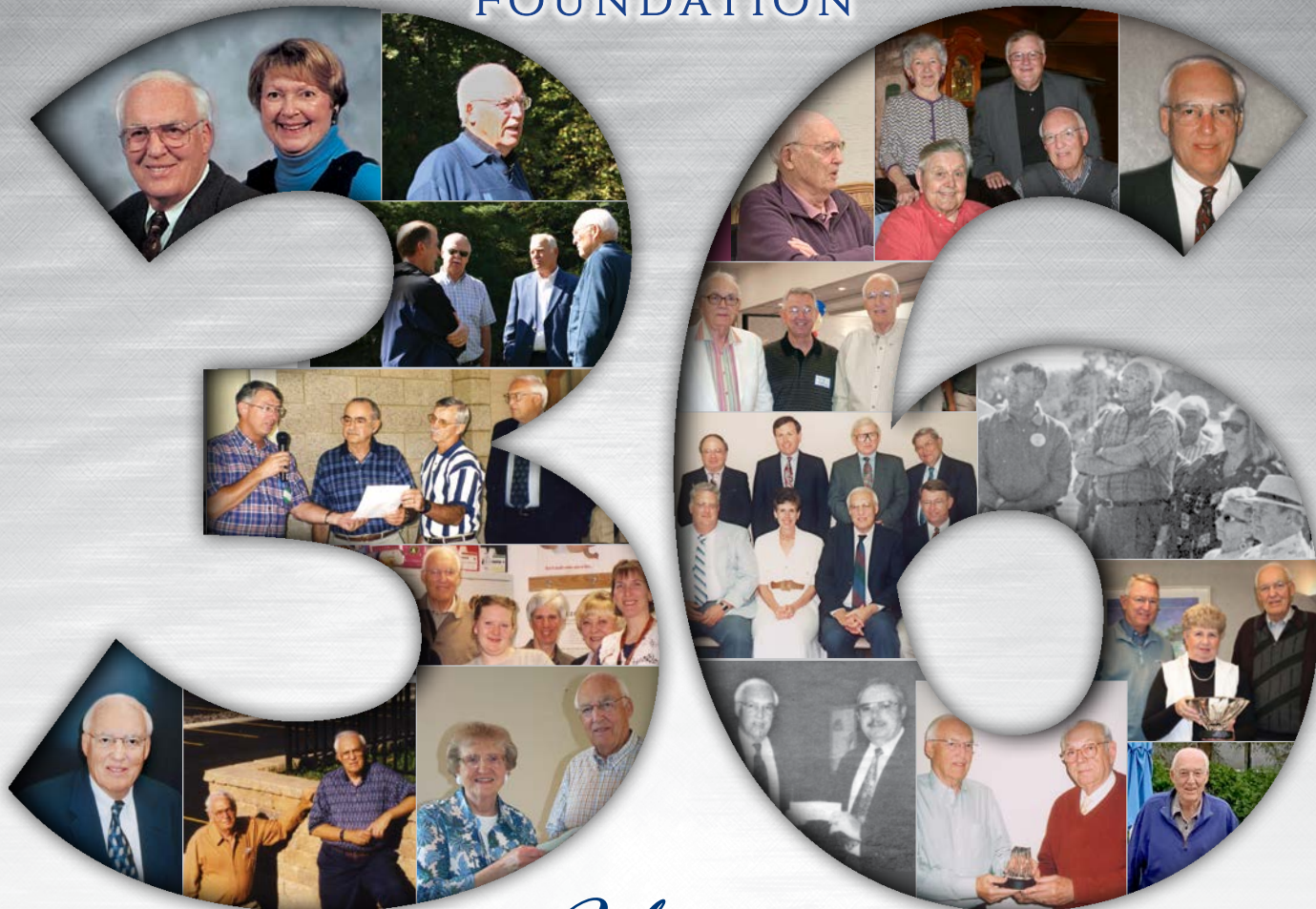


ANNUAL REPORT
JULY 1 **2021** TO **2022** JUNE 30

Includes
2021
Financial
Statement



BLACK RIVER FALLS AREA
FOUNDATION



Years
OF COMMUNITY GIVING

CELEBRATING THE VISION AND LEADERSHIP OF
GIL HOMSTAD
OUR FOUNDING TRUSTEE

This Annual Report is Dedicated to Gil Homstad, husband, father, brother, friend, leader, mentor, visionary, founder of BRF Area Foundation, and so much more, to so many people. Expressing gratitude on behalf of the entire community ~

*BRF Area Foundation,
Trustees and Executive Director*



Gil Homstad

Black River Falls was truly blessed when Gil Homstad decided to 'come home' after living in Madison. Gil is a humble and discreet man who has done more for this area than most of us will ever realize. Over the past thirty-six years, if you looked closely behind the scenes of our community, Gil would be there, quietly providing guidance and assistance.

When Gil's dream of a foundation was realized, he hoped it would serve as a community tool. This tool could be used by many all working toward the ultimate goal, improving the quality of life in BRF. Under his direction, BRF Area Foundation has achieved tremendous success. Gil's accomplishments are not limited to the community projects and improvements we can easily see and enjoy each day. His awareness of the needs of those less fortunate led to the establishment of, and funding for, several programs designed to provide help with essential needs to thousands of residents. Everyone living in this area has benefited from several of Gil's projects, even if they don't realize it. It is difficult to imagine what our community would look like today were it not for his many years of tireless work on our behalf.

Gil's vision for a Foundation was well thought out. He built a solid base, and long-range plans to ensure the Foundation's growth, stability, and future. Over the years, Gil served as a mentor to many in the community but most importantly to past and present Trustees. Have no doubt, BRF Area Foundation will continue

successfully moving forward, and the legacy Gil created will live on well beyond our lifetimes because of the groundwork he laid.

Our fervent hope is that Gil's change from Foundation Chairman to Chairman Emeritus, will allow him to regain use of his dining room table, which is often filled with the tangible evidence of his community work. Gil, may every day be filled with happiness!



Gil Homstad's family

THE CHRONICLE, WEDNESDAY, MARCH 12, 1986



The first donation to the Black River Area Foundation was made by Gene Dana, Black River Falls Rotary Treasurer. He is shown above presenting a \$1,000.00 check to the Foundation Committee. Pictured left to right are: Dana, Dr. Dennis Richards, Tom Lister, Gil Homstad, Dr. Al Lahmayer, Dale Sherman and John Lund.

DECEMBER 26, 2007 BANNER JOURNAL



Bee Herzberg, Assistant Secretary (C) Dave Hoffman, Vice-Chairman (L) and Gil Homstad, Chairman (R) have worked together since the BRF Area Foundation was founded 22 years ago. Bee will be retiring at the end of this year. Bee said, "It has been a privilege to work with such a great group of people. I have watched as Gil's vision and leadership created this organization, and how the dedication of the Officers and Trustees has grown the Foundation into the overwhelming success it is today."

FOUNDATION FUN FACTS

In 1987, the Foundation awarded its first grants, \$2,562 to four local non-profit organizations. At the time, Gil is quoted as saying, "I can see the day when . . . Foundation disbursements will reach the \$40,000 to \$50,000 range each year." This may be the only time Gil's vision ever fell short! During the period covered by this report, the Foundation disbursed over \$500,000 to 30 different non-profit community organizations.

When the BRF Area Foundation became official in 1986, it set a record as the smallest community (population) in the entire USA to have a Community Foundation. Additionally, it was only the seventh Community Foundation, of any size, in the State of Wisconsin.

LEADING BY EXAMPLE: Lessons Learned from Gil Homstad

A Bird's-Eye View

Ann Homstad

One of our earliest family memories of Dad's community giving efforts came in the form of a parrot named Fair Share. We were living in Madison then and the bird was the dubious reward for the business person raising the most money that year for Madison's United Community Chest. Dad was the winner. I'm sure as kids we were both thrilled and a bit terrified by our exotic new pet. Mom was probably terrified too--at the prospect of years of parrot care coming her way—those birds can live for decades!



Some (including Al Lahmayer) might say Fair Share was proof that no good deed goes unpunished.

Fortunately, that did not deter Dad from a lifetime of strategizing, fundraising, and giving personally to enrich the causes and places he cares about, the dearest of which is Black River, the hometown to which he and our mother Alice returned in 1972.

As Gil's kids and grandkids, we can say wholeheartedly that we have learned so much from him.

Without parroting platitudes (sorry, couldn't resist), here are some of those lessons:

- People give to people—a small committed group of individuals can spark others to give.
- Lead by your own actions and others will follow.
- Don't just try to solve problems, look proactively for needs and opportunities.
- Seek advice and collaboration from those who know more than you do about a subject.
- Plan to sustain as well as create community assets. Establish maintenance funds!

We're so proud of Dad. And we're proud to be from Black River. We love to have friends visit and show off the wonderful amenities that this community of generous and committed individuals has made possible. Black River is a beautiful place with both opportunities and problems that will rest in the hands of coming generations. Fortunately for all of us, we've had good examples to follow.

And Fair Share's destiny? Mercifully for our mother, a colleague soon heard Dad had this parrot on his hands and offered to take her for his (more) eager family. We kids escaped emotionally unscarred from this sudden removal. Guess you can say that all's well that ends well when you give your Fair Share.



Gil Homstad's family

Pass It On!

Kay Finch, Chairman BRF Area Foundation

During my years of service as a Foundation Trustee, I have gained a vast amount of philanthropic knowledge. My lessons have been numerous and thought provoking, and most have come from Gil.

A philanthropist is one who aspires to make a true impact upon the world and community in which one lives. A philanthropist needs to be someone with the intelligence to be able to recognize the problems that the community needs to address, such as financial and social constraints relating to hunger or education, recreational family activities, or a host of other issues. It is important for philanthropists to possess the analytical skills to see the world and

their own community for what it is and to study and discuss the solutions necessary to make it a better place to live. Also, I have learned to practice good stewardship and growth of donors' funds.

I have first-hand knowledge in how to approach potential donors for larger donations having been on the receiving end of various conversations. Yes, Gil, I was taking notes!

Lastly, and perhaps most importantly, the definition of philanthropy – the love of humankind. I have always admired Gil for his compassion for those folks less fortunate. I've been truly blessed to have been a member of the Board of Trustees with Gil as Chairman for over a decade. His empathy and tender heartedness motivate people to go out of their way to relieve the misfortunes of others.

Thank you Gil for the honor and privilege to have served under your leadership. I thank you for all of the knowledge and wisdom which you have shared. As Board Chairman, the Trustees and I look forward to sharing your legacy. Be assured the BRF Area Foundation will remain dedicated to your vision and mission.



The Foundation celebrated 25 years in 2011. Serving on the Silver Anniversary committee were Kay Finch & Jean Lee.

Please read on as others share their experiences and the lessons they learned from Gil.

LUNDA COMMUNITY PARK PROJECT

Swimming from Start to Finish

In 1996, the Foundation was interested in purchasing land to create a public park. At the same time, Milt & Lydia Lunda were looking into plans to replace the old swimming pool. An arrangement was reached between the Foundation, Milt & Lydia Lunda, and the Lunda Charitable Trust. Milt and Lydia agreed to contribute one million dollars; contingent on a swimming pool being located within the park, and on the Foundation raising the remaining funds needed. The Hoffman Family agreed to fund the aquatic center portion of the park.



Marilyn and David Hoffman, 1997



Hoffman Aquatic Center



Peter and Jone Hoffman, 2002

One Step at a Time

Gil has always had good ideas on how to fundraise for projects, and this was a big one. Gil suggested we break down the project into segments, with each segment having a sponsor. Gil did what he does best, and the park became a reality.

During construction, Trustees discussed ways to recognize donors, both large and small, within the park. It was unanimously

Continued on page 4

COMMUNITY PARTNERS CELEBRATE THE

agreed that the park be named in honor of Milt and Lydia Lunda, the aquatic center be named in honor of the Hoffman Family, the shelter building be named in honor of Clifford and Blanche Nelson, and the two softball fields be named the Rotary Field and the Nelson Industries Field. Also, anyone who had donated fifty dollars or more would have their name placed on a paving brick within the park. There were 323 donors who pledged \$563,331 to the Community Park Fundraising Campaign.

Through the Foundation, Gil presented ideas that became a dynamic and driving force behind many community projects. Those projects have "enhanced the quality of life in the Black River Falls Area" just as Gil intended when he wrote the Foundation's mission statement thirty-six years ago.

David Hoffman, Vice-Chairman BRF Area Foundation

SKATE PARK PROJECT

Skating to Success



Late in 2004, the local Rotary Club was discussing potential projects that the Club could sponsor in celebration of the 100th anniversary of Rotary International. One of the projects being considered was the construction of a skatepark. A group of Rotary Club members met with the Mayor and Steve Peterson, Parks and Recreation Director for the City. Based on the group's recommendation, the Club decided to sponsor construction of the skatepark as it's 100th anniversary project with the cooperation of the City and the Black River Falls Area Foundation.

During 2005, Club members worked with the City, potential contractors and local skaters to develop a design and budget for the park. In October of 2005, the design and budget were completed. The Club asked for volunteers to conduct the fund-raising effort and Gil naturally stepped up to take a leadership role. The total project budget was \$344,000, which included a \$30,000 maintenance fund recommended by Gil to ensure that money would be available without having to depend on the City's resources.

I had never been involved in raising this amount of money for a community project and I was impressed by Gil's strategy, tactics, and enthusiasm. We developed a list of potential donors, established a target donation for each one, and assigned volunteers to approach each donor. The target donation was based on the donor's participation in past projects, and we also relied on Gil's intuition.

I was particularly impressed with Gil's utilization of a target donation. As a business owner, I had been asked for donations many times. Often, when I would ask how much the organization would like from me the answer would be "whatever you'd like to give." This made it awkward because I had no idea if they were looking for \$500 or \$5,000. Most of the skatepark donors reacted very positively to a target donation because they knew the amount of our request and could make their decision accordingly.

Fund-raising was completed on schedule and enough additional money was raised to provide lighting in the park, which was not part of the original budget. Construction began in June of 2006 and a

grand opening was held on August 13th.

In July of 2014, significant improvements and renovations were made to the Skate Park. Thanks to Gil's foresight, funds were available in the Rotary Skate Park maintenance fund to cover these expenses. Today there remains more than fifteen thousand dollars in this fund which continues to accumulate investment earnings.

Gil provided a great deal of advice and guidance though the entire process including preparation of a brochure, pledge forms, and presentations. Most importantly he taught the least experienced of us how to ask for a donation by explaining the benefits of the project and by showing our enthusiasm and commitment. Gil had a fantastic ability to communicate his vision for the skatepark and clarify how it would benefit the community. Gil's vision, passion and dedication showed his commitment to every project that he was involved in.

Mike Dougherty, Co-Treasurer BRF Area Foundation

OCTOBER 6, 2010 BANNER JOURNAL BRF Rotary Club donates \$4,000 to Skate Park Maintenance Fund



Klare Volgren (r), president of the Rotary Club of Black River Falls (BRF) presented \$4,000 to the BRF Area Foundation Rotary Skatepark Maintenance Fund. Accepting the donation was Mike Dougherty Foundation treasurer and member of Rotary.

INDUSTRIAL PARK PROJECT

Boosting the Economy

To recognize the achievements and importance of Gil Homstad to the City, it is appropriate to recognize the late Tom Mills who convinced Gil to relocate from Madison to Black River Falls. Tom was a huge supporter of the area and worked tirelessly to improve the quality of life for its residents.

Although Gil was mentor to me at City Hall for 30 some years his most important role for the City may have been with the Industrial Park Commission.

In 1978 when the Jackson County Iron Company operation was winding down, the City adopted ordinance #484 creating the Industrial Park Commission. Then Mayor Lou Perry appointed Gil, Mike Anderson, Orv Casper, Jerome Bjerke and Tom Mills to the Commission. A dedicated group, but I have to say, Gil carried the heaviest load.

To show the dedication of this group they met every two weeks for several years. There were several "learning opportunities" until the City attracted LEESON Electric Motors in 1988.

With Gil's leadership the City was able to present a financing package as 1 of 84 locations to do so. The City made the first cut down to 20. Then Gil, with minimal assistance, put another proposal together. Made the cut to 4 locations. Another proposal, this one a little fancier, was made in person at the LEESON headquarters in Grafton, WI. Chairman Mike was able to get the Dairyland Power plane to fly the City contingent to Grafton.

As always, Gil led the presentation. Success! Gil also led the proposals for LEESON'S two expansions. The Land O'Lakes story is basically the same. Neither would have happened without Gil's knowledge and leadership. Nelson Industries also relocated in the Industrial Park with the assistance of the Industrial Park Commission. These industries employ hundreds of local citizens

VISION & LEADERSHIP OF GIL HOMSTAD

on a daily basis and have contributed several hundred million dollars of wages and other expenses into the local economy. Gil Homstad, with a little help from his friends made the City and surrounding area a pretty nice place to live.

*Bill Arndt City Administrator (Retired)
City of Black River Falls*



2013 -Mike Anderson (left) and Gene Ransom helped develop the Incubator Building and were involved with its management during its entire existence.

Post Script

The incubator building located in the Industrial Park was eventually sold to Riverfront (n/k/a APTIV), a non-profit organization dedicated to helping people with disabilities. Industrial Park Commissioners donated all proceeds from the sale to the Foundation, and the Incubator Economic Development Fund was created. Since that time, the fund has provided \$85,173 toward annual community grants, and \$50,000 toward community projects. The balance of \$198,025 continues to provide annual earnings used for grant awards.

NEW LIBRARY PROJECT

Reading the Future



In 1991, the Foundation, together with the Library Board, reviewed an analysis of current and future needs of the BRF Public Library. The Library Board was also interested in creating a space that would collect, preserve, and display historical information.

By 1992, an Action Plan for the Library Project was developed. The Foundation agreed to work with the Library Board to determine community wants and needs. The Foundation was the first organization to pledge funds for the project. Trustees approached potential large donors to solicit ideas and discuss funding for a new facility.

Mary Van Gorden's donation was directed toward including a History Room within the Library. Through the Foundation, Mary also established an Endowment Fund to address future expenses of the Library's History Room.

Bids for the new library were opened on March 30, 1994, with groundbreaking scheduled for April 17, 1994, and completion in November of 1995. The Dedication Ceremony for the new BRF Public Library was held June 18, 1997.

Making History

To be an effective leader a person needs to possess a high level of professional/technical knowledge plus outstanding interpersonal relationship skills. Gil Homstad has an abundance

of both. I learned this, first-hand, while serving on the Board of Directors at the Jackson County Bank and then when helping Gil organize the Prime Time Club at the Bank.

When plans for a new library in Black River Falls were initiated, I made a commitment to include a "Jackson County History Room" and was asked to organize a planning committee. As our plans developed, we shared them with Gil and benefited greatly from his suggestions. Because he has deep roots in Jackson County and an interest in local history, Gil gave us encouragement and wise counsel.

Financing the ongoing operation of the History Room became an important subject as the building of the Library progressed. Once again, I turned to Gil for advice. By then the Black River Falls Area Foundation had been established, and Gil guided me in setting up an endowment fund to subsidize the Room. This was done in August of 1995.

During the ensuing years, Gil kept me involved in the utilization of my fund, including the need for changes as they occurred. It was obvious then that Gil, as Chairman of the Foundation's Board of Trustees, was a hands-on leader, deeply committed to and highly qualified for his position.

Working with Gil is always a pleasure. His insight and vision and his kind manner make him

a superb leader and advisor. Many of the outstanding facilities in our community, including the Jackson County History Room, have benefited greatly from his involvement. Also benefiting have been the many donors, from far and near, who have learned valuable lessons about the art of philanthropy from this expert, Gil Homstad.



2007 - Mary and Gil

Mary Van Gorden, Long-time Foundation Supporter

FOUNDATION TRAIL PROJECT

If You Build It, They Will Come



Foundation Trustees began discussing a long-range plan for the construction of a multi-purpose trail parallel with the Black River in 1994, and the first section of the trail from River Grove Apartments to Pine View Nursing Home was completed in 1997.

The City of BRF agreed to be the project's public sponsor for the remainder of the trail. A grant from the state's Transportation Enhancement Fund resulted in \$600,000 for the project. Construction of the second section of trail began in 2000, and the project was complete that same year.

Continued on page 6

COMMUNITY PARTNERS CELEBRATE THE

After six years a goal, that began as a vision, was realized. A dedication and ribbon cutting ceremony were held on September 16th of that year.

Between 2004 and 2008, Trustees followed Gil's advice and organized annual Foundation Trail Walks to raise monies for a Trail Maintenance Fund. Today there is over \$35,000 in this maintenance fund which continues to accumulate investment earnings.

Staying the Path

In our lifetime we meet many people, but most do not have a lasting impact on our personal lives let alone our communities. Working with Gil on the Foundation both as a previous Trustee and as Chairman of the Foundation Trail project, I assure you that he is one of those unique individuals who has made that type of impact! Gil could always be counted on to provide valuable information and support for any issues that would arise while we attempted to establish the specifics for forming the Foundation Trail. Gil's calm demeanor was something I found reassuring whenever problems arose. The dedication, commitment, and hard work he exhibited when working on projects for our community were to be admired. I consider it an honor to have been able to work with Gil and feel the positive impacts he has made to this community are immeasurable! I can only hope my words convey the utmost respect I have for Gil and his many, many accomplishments.

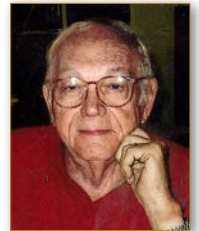
*Dr. Jerry Kitowski, Chairman
Foundation Trail Committee*



you don't have a cause. We wanted a fund drive to get money from folks so we could give money to other folks. We did eventually sell the idea, made our modest beginning, and BRF became the first small community in the entire U.S. to have a community Foundation!

After a couple of years, I noticed how many requests we got from BRF teachers, far more than we could help with Foundation funds. I had the idea to start an Educational Enrichment Fund. We were able to do this by creating a donor advised fund, with the Foundation as 'the Mother Ship'. I made an original donation and organized a board of directors for the Education Enrichment Fund. As a part of the Foundation we were able to raise funds without hurdling regulations, and meet IRS requirements for auditing without the expense of hiring an accountant. Without the Foundation, the 'red-tape' would have made the creation of the EEF nearly impossible. The BRF-EEF is now more than \$450,000. Because the EEF does not have to wait for the school budgeting process, it's able to quickly provide grants to help teachers. None of this could have happened without Gil's great insight. It was an idea that will help the BRF Area for many, many years to come.

*Al Lahmayer
Originating Foundation Trustee*



ANIMAL SHELTER PROJECT

Joining Forces to Help Furry Friends



The Jackson County Humane Society (JCHS) had struggled for many years to raise money for a new shelter. On May 24, 2017, officers of JCHS made a presentation to Foundation Trustees. Trustees agreed there was a need for a new Animal Shelter building. In December of 2017, recognizing a major fund-raising campaign would be needed, Foundation Trustees offered their assistance to the humane society. Brad Dobbs and Ashley Ahl joined the JCHS and worked with their members on preparation for a new facility, Brad focusing most of his efforts on fundraising and Ashley as the liaison for Black River Falls Area Foundation (BRAF).

Fundraising for the Jackson County Animal Shelter's new building was a joint effort between the BRAF, the Lunda Charitable Trust, Jackson County, the JCHS, and members of the community. This project was unique in scope and concept because the Foundation was aiding fundraising efforts for a building to be owned by the County, with utility contributions by the City of Black River Falls, and animal welfare support from the JCHS. This dynamic challenged traditional fundraising strategies.

Gil was instrumental in his guidance to develop an approach to bring the aforementioned entities together to outline roles and responsibilities for each entity. By identifying each organizations role, the Foundation was able to move forward with fundraising; ultimately contributing an \$100,000 grant, \$88,000 in private

SPAULDING PLACE

All Roads Lead Home



Spaulding Place

In July of 2012 Mike Anderson, Manager of Jackson Electric Cooperative and former Black River Falls Mayor, brought together several community leaders to discuss the need for additional congregate

housing for seniors in Jackson County. Among those leaders was Gil Homstad, who took an active role in the planning and developing of "Spaulding Place," which opened for its first residents in August of 2015. Gil's knowledge and special abilities were crucial in many phases of this project, including site and developer selection, as well as financing and marketing. Today this facility is home to 27 families and a proven asset for this community.

Mary Van Gorden, Long-time Foundation Supporter

EDUCATION ENRICHMENT PROJECT

A National First

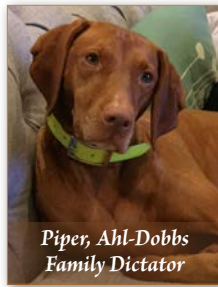
Before coming home to BRF, Gil lived in Madison and was familiar with the "Big City Foundation." His brilliant idea was to use the Foundation concept in a small-town setting. This had never been done before.

Gil recruited some fellow Rotarians and we met in the bank meeting room at 7 a.m. several times a week. You would be surprised how much work there is to organizing a 501(c)3 when

VISION & LEADERSHIP OF GIL HOMSTAD

donations through the Foundation's fundraising channels, and an additional \$12,000 grant to bring the total to \$200,000 contributed by the Foundation to the project.

The success of this fundraising effort has afforded our community a safe place for the abandoned and stray animals of Jackson County to comfortably stay while waiting to be permanently rehomed.



Piper, Ahl-Dobbs Family Dictator

Ashley Ahl & Brad Dobbs

In the past Interfaith has also reached out to Gil to assist with questions on investments and sustainability. Gil's knowledge and expertise in these areas provided us with key tools to ensure that Interfaith will continue to grow.

When you look at the Black River Falls community and the foundation it has been built on, you can't not think about Gil Homstad. Gil has been instrumental in so many projects; when I think about his impact on the community, I often reflect on this quote from Mother Teresa. "I alone cannot change the world, but I can cast a stone across the waters to create many ripples." The ripples that Gil has created in our community have built the Black River Falls Area Foundation, the industrial park, community parks, non-profits, and much more. His impact will continue to ripple across our community for generations to come.

Lori Chown Program Director

Jackson County Volunteer Interfaith Caregivers

INTERFAITH CAREGIVERS PROJECT

Foundation Roots in Faith

In 1987 a private donor from California wanted to make a gift of \$15,000 to start a community organization in BRF to assist homebound older adults and people with disabilities. An established local organization was needed to take responsibility for donated funds until the program was established. While the future of such a program was certainly unknown, Gil believed the idea was not only possible, but also sustainable. Under his direction, the JC Ministerial Association agreed to form a steering committee to research the idea and pursue grants from the Public Welfare Foundation and the Retirement Research Foundation.

In 1989, Karen Foust was hired as program manager, the Foundation turned over the start-up funds to the new organization, and Jackson County Volunteer Interfaith Caregivers was born. The first year Interfaith had ninety trained volunteers that served thirty-nine individuals. For 28 years, Karen's direction allowed Interfaith's consistent growth. Each year the number of volunteers increased, as did the number of people in need. Upon Karen's retirement in 2017, Lori Chown was hired as her successor. The dedication and commitment of these incredible women, board members, and hundreds of volunteers, is in large part the reason for Interfaith's tremendous success.

Wisdom, Vision & Faith

In a time of communicating through, email, text messages, and a variety of other technology, Gil Homstad handwrites personal "thank you" notes. I received one of those notes in 2017 from Gil when I retired from Interfaith. That note reminded me that Gil is much more than a community leader and successful businessman. Gil Homstad has compassion, kindness, and respect toward all people.

In 1989, Gil, along with other people from the foundation, had the wisdom, vision, and faith to see that Jackson County had, and will continue to have, an aging population that needs support. My note, which I have saved, reminds me that Gil is a man of integrity that strives to do best for the good of all.

Karen Foust, Program Director (Retired)
Jackson County Volunteer Interfaith Caregivers



1989- Karen Foust



Faithful Leadership

In 2022 Interfaith has 250 volunteers serving over 200 individuals and had outgrown their facilities long ago. When Interfaith set out to do a building campaign, we knew we would need someone with a great deal of fundraising expertise, so we contacted Gil. Gil was instrumental in the planning phase of our capital campaign. Gil's insight into community fundraising was vital for the success of our project, which raised over \$2 million dollars. As we maneuvered through the campaign, we had frequent conversations with Gil to see how to best communicate the next steps. Gil has a natural ability to analyze community issues, and the foresight and knowledge to address those issues.

(THE FIRST) LUNDA COMMUNITY CENTER PROJECT

Schooled in Community Collaboration



In 1988, under Gil's leadership, the newly established Foundation determined their first goal would be construction of a Community Center. This decision was based on residents identifying it as a need in a recent community survey. The Center would include an indoor swimming pool, theatre, walking track, exercise room and racquetball courts. Trustees began their research by visiting the Spooner Area Civic Center in 1989. They also reviewed brochures, fact sheets, and fundraising campaign reports, from the Barron Area Community Center.

Continued on page 8

COMMUNITY PARTNERS CELEBRATE THE

At this same time, plans were underway for the construction of a new middle school. In conjunction with the building of the new Middle School, the Milt and Lydia Lunda Family agreed to donate \$2 million for the construction of a Community Center, if the Foundation could raise the remainder of the funds. To honor the Lundas for their tremendous contribution, the decision was made to name the new facilities the Lunda Community Center and the Lunda Theatre.

During the capital campaign, Trustees wrote personal appeals to potential donors, and the community responded with overwhelming support. A special Gourmet Dinner, prepared by Pastor James Know was planned as a fund-raiser. Donors giving \$1,000 or more were invited. So many donors met the requirement, it was necessary to schedule two dinners, which were held in April at the United Methodist Church.

Dedication of the new Middle School and Lunda Community Center was held on August 25, 1991. The Foundation sponsored an Opening Performance in the Lunda Theater. The free concert was held Saturday, October 19th with two performances to thank the many donors who contributed to the Lunda Community Center, and the public for their support. The BRF Area Foundation's first big project was a resounding success and history was made.

Upon completion of the new Lunda Community Center in 2016, the facilities in the Middle School are used by the schools' wrestling and swim teams.

SKYLINE GOLF COURSE PROJECT

FORE Sight

In 2014, Gil asked to meet with Fred Stai, Buz Hoefler and myself. Due to negative financial results over the past several years, concern was expressed over Skyline's future. Skyline is a significant asset to the City and County. It brings revenue into our area, and even more importantly, it provides residents with a source for recreation and dining. In addition, it provides a facility with enough space for weddings, funeral gatherings, and large meetings, hosting over three hundred such events each year.

Under Gil's guidance, a plan was developed to conduct a fund-raising campaign to raise \$250,000, an amount sufficient to help insure Skyline's future. The funds would be housed in the Foundation. When needed, annual earnings could be used to assist with Skyline expenses. The plan also outlined an allowance for the use of principal only once every five years if necessary.

Meetings with individual potential donors, businesses, BRF Rotary and Lions Clubs and other groups were scheduled. A targeted mailing was sent to interested residents of the city and county asking them to consider a five-year pledge of \$1,000, \$2,500, \$5,000, \$10,000, \$25,000 or \$50,000. The amazing generosity of this community resulted in pledges from ninety-four households, businesses and groups totaling just over \$590,000, with each and every pledge being fulfilled.

Again in 2020, Gil headed up a plan to replace the aging golf carts at Skyline. Securing a significant matching donation from the Foundation, Gil, Fred, Buz and I recruited twenty eight additional donors to raise a total of \$160,000. These donations allowed Skyline to obtain 34 new carts and to start a cart replacement fund for the future. (See pages 21-23)

Dennis Young,
Foundation Trustee & Skyline Treasurer



SCHOLARSHIPS

Solid Return on Investment

JULY 27, 1994 THE BANNER JOURNAL

BRF Foundation gets educational donation



Black River Falls School Superintendent and Black River Falls Area Foundation Trustee Dr. Dennis Richards accepts Ruby Stamstad's (center) donation to the Foundation which has been ear-marked for educational scholarships. To the left Foundation Trustee John Lund looks on as the donation is made.

Gil Homstad's community impact through the BRF Area Foundation cannot be overstated. The scope and breadth of the Foundation's philanthropy is far reaching within Jackson County. The administration of scholarship dollars was not part of the initial Foundation plans. Originally, it was thought that scholarships were the purview of the area schools. However, in large part thanks to Gil's keen understanding and enthusiasm for the potential good to be done, the growth and oversight of scholarship programs emerged as an integral component of the Foundation. Gil understood investing in our youth will yield high returns. Scholarships extend well beyond the distribution of funds to deserving students. Foundation members came to recognize scholarships strengthen the community as recipients return to Jackson County with new skills and knowledge, which translates to a stronger community. This is at the core of the Foundation's work; to strengthen, grow, and help make Jackson County a better place to live and work. The first scholarships were awarded in 1989. This year sixty-four students will be awarded \$124,500 to continue their education with the Foundation's assistance. To date the Foundation has awarded \$1,063,810 to 716 students! The decision to embrace and support the inclusion of scholarships within the scope of the Foundation's mission will surely be a large part of Gil's legacy as the author of BRF Area Foundation. (See pages 17-19)

Dennis Richards
Superintendent BRF School District (Retired)
Former Foundation Trustee

FOUNDATION FUN FACT

Thanks to the Foundation and a 1998 bequest of \$46,800 from the Gaylord and Clara Emerson Estate, \$63,189 was able to be directed to Black River Memorial Hospital in 2007 for construction of a new chapel/meditation room, since dedicated to the Emersons.



VISION & LEADERSHIP OF GIL HOMSTAD

SOCCER FIELD PROJECT

Vision Fulfills Needs

In 2007, Milt & Lydia Lunda worked with Gil to make a donation to the Foundation. This donation was used to purchase acreage, south of County Hwy A, west of Forrest Street, and east of Eighth Street, known as the McNulty property. Foundation Trustees met with Milt Lunda and School District officials to discuss potential uses for the property. Interest was expressed in working with the local Soccer Association to develop soccer fields. After further research, a parcel of land located north of Spaulding Road, west of Rye Bluff Road, and east of Krome Road, offered a better location for this purpose. By selling a portion of their McNulty property, the Foundation was able to purchase the land on Spaulding Road which would become the Soccer Fields and a Community Garden. Later the Foundation was able to use the remainder of the McNulty property to facilitate the construction of Red Creek Elementary School.



Red Creek Elementary School



Scoring a Goal

Gil and the Foundation were instrumental in helping to anchor support for the development of a safe and permanent home for youth soccer in BRF. With Gil's guidance, the Jackson County Soccer program was not only able to obtain land, but with the Foundation's financial support, the funding needed to turn a hilly cornfield into a beautiful complex of age-appropriate fields. We were very naïve to the process of fundraising for such a large project. In 2011, with Gil's gentle tutoring and support, the dream of a soccer park became a reality when the Foundation donated their Spaulding Road property to the City of BRF, and pledged \$125,000 toward the construction of the fields.

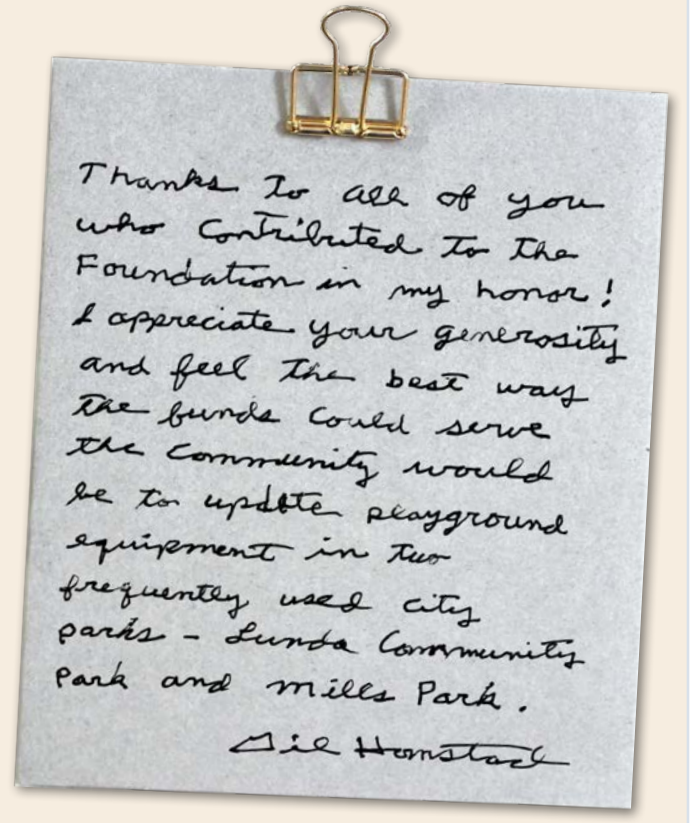


Personally, I am extremely grateful for all the knowledge Gil was willing to share, not only through this process, but also during the nine years I served on the Foundation board as well. BRF is a much better place because of the many wonderful similar projects that were funded during Gil's leadership and made possible due to his foresight. For that, we are all extremely lucky to have had him graciously give his time, energy, and vision for the past thirty-six years. Thank you, Gil!

Michael Mahan, M.D., Krohn Clinic
Former Foundation Trustee



Many people honored Gil with gifts to the Foundation. \$28,700 was donated to celebrate Gil's accomplishments, and in appreciation of all he has done for our community. *Please see an acknowledgment of these individuals on the back cover.* The Trustees felt it would be only fitting for Gil to select the project(s) and/or organization(s) to be the final recipient(s) of these contributions. When Gil was told, this man who never hesitated to support a worthwhile community project, no matter how big, how difficult, or how impossible it seemed, actually hesitated and said, "Do you know how hard that is going to be?" Yes Gil, yes, we do! See Gil's thank you note below to find out what he decided!



FOUNDATION FUN FACT

Gil Homstad was nominated for the 2001 outstanding Volunteer Fundraiser Award from the Upper Mississippi Valley Chapter of the National Society of Fundraising Executives

FOUNDATION HIGHLIGHTS

- In July, Trustees entertained and approved a special grant request for start-up funds for a new community resource, to be called the **Foster Care Closet**. The organization's mission is to offer a free resource for caregivers of foster children in BRF and surrounding communities. As of November 2021, there were sixty children in Foster Care in Jackson County. The Foster Closet will provide gently used items, such as clothing, high-chairs, cribs, and walkers, to foster care providers. Monetary donations will be used to purchase diapers, wipes, hygiene items, socks, and undergarments.
- Also in July, Julie Murray, Executive Director made a presentation to BRF Rotary Club, sharing information about our Alumni Scholarship recipients, their outstanding achievements, and the need for additional **Alumni Scholarships**. (See Page 13 - McNulty Article)
- Trustees approved use of a Pass-Through Fund to assist the family and friends of **David "Dubs" Young** in a creating a memorial for him. The golf course was very special to Dubs and the group was hopeful they could raise enough funds to build a new deck on the Skyline's Club House.



Dubs Young was born and raised in BRF, graduating in 1972. He loved the community he grew up in, and always considered it 'home' regardless



Dave "Dubs" Young

of where he was living. At the age of 13, Dubs won the State Jaycee Golf Tournament in Madison and went on to represent the state in the National Tournament in San Diego, CA. In high school Dubs excelled in football, basketball and golf. Dubs' life centered around participation in athletics, bringing him joy and, later in life, several job opportunities. Our condolences to Dubs' family and friends. (For the rest of the story, see Skyline article on pages 21-23)

- A special COVID relief grant request from **Black River Memorial Hospital** was approved. Funds will be used to purchase \$10 gift cards for gas and essential needs. The cards will be given to chemotherapy patients, many of whom are struggling financially, in addition to, fighting their cancer. During the pandemic, some of these individuals lost their jobs and/or healthcare benefits, and even more could not work because of the risk to their health.
 - Approval was given for a disbursement from the **Foundation Trail Maintenance Fund** to the City of BRF for alterations to the walking bridge between the old Federation property and the Chamber of Commerce. To truly be handicap accessible, access to the bridge must be level with the sidewalk.
 - Tim & Kay Finch committed funds to provide five \$2,000 scholarships annually to **BRF Alumni students**, beginning in 2022. Thank you Tim & Kay!
 - Trustees approved the distribution of a \$200,000 **contribution to Interfaith's** capital campaign for a new building. This contribution qualifies to be included in the match amount needed to earn the maximum grant offered by the Lunda Charitable Foundation.
- After hearing wonderful things about our Foundation, and its Annual Reports, from Foundation donor and Holmen resident, Chuck Olson of River Valley Realty, the **Holmen Area Foundation** requested copies of our last ten reports. They established a Foundation several years ago, but it has not taken off. They hope our Annual Reports will give them ideas to jump-start their organization.
 - In December, the **Warming Hearts Fund**, established by Jim & Kathy Powell, made its first annual distribution. Funds were sent to Jackson County Department of Health and Human Services to purchase special Christmas gifts for ten children in foster care.
 - On January 1, 2022, **Mary Beth White-Jacobs** became the Foundation's newest Trustee.
 - Addressing the issue of **homelessness in our community** was identified as one of the Foundation's long-range goals. In addition to helping homeless individuals, the Foundation is interested in maintaining the integrity of the downtown area and helping downtown businesses protect their investments. A new community group is being organized to identify both long- and short-term potential solutions. Foundation Secretary Kristi Hanson and Executive Director Julie Murray will represent the Foundation on this committee.
 - In the Spring of 2021, the Foundation helped a small group of community individuals host the "Swing for Students" fund-raising golf event. They chose to donate the proceeds to the BRF School District for their Angel Fund, which pays student lunch debt. The event was so successful, in January Barb Simonis, Jordan Norman, and Brad Dobbs presented a request asking Trustees to allow establishment of a permanent "Swing for Students" Pass-Through Fund to be used annually to raise funds for the BRF School District. Trustees unanimously approved. The event was held again in June of 2022. See Page 16 to find out which BRF SD need will benefit from the group's hard work this year!



New Dave "Dubs" Young Memorial Deck at Skyline Golf Course.

CHAIRMAN OF THE BOARD
December 14, 2021



GIL HOMSTAD

After thirty-five years, Foundation Chairman Gil Homstad presided over his last board meeting on December 14th, 2021. This was a bittersweet event. When the meeting concluded, Trustees surprised Gil with a small get together of his friends and family. Attendees included Gil's children, Ann, Eric, Heather, son-in-law Brian, granddaughter Carly, special friend Judy Hansen, past Trustees Jean Lee and Sue Michaelson and long-time Foundation supporters, Peter and Jone Hoffman, Al and Jeanette Lahmayer, Dr. Gene and Janet Krohn, and Mary Van Gorden. Fortunately for the Foundation, on January first, Gil became the Foundation's Chairman Emeritus.

On behalf of the community, the Foundation presented Gil with a special gift. Door County glass artist Stephanie Trenchard has been a favorite of Gil and his late wife Alice for many years. They collected several pieces of hers, including a special one they commissioned for their 50th wedding anniversary featuring meaningful times in their lives. This new piece commissioned by the Foundation Trustees was intended to hold special sentimental value for Gil, highlighting the river, trees and trails of the Black River area and his roots in the community.



- Trustees approved a one-year membership fee to join **Wisconsin Philanthropy Network**. The Executive Director and all Trustees will be considered members. This professional organization was instrumental in the software evaluation process, by providing connections to other non-profit organization members, and also excellent information regarding various software applications. Membership will be reviewed again at the time of expiration.
- Trustees approved creation of a Pass-Through Fund to assist the **Lunda Community Playground Improvement Committee (LCPIC)** with their planned

future fund-raising campaign.

- The **BRF Chamber of Commerce** requested the creation of a Pass-Through Fund within the Foundation to be used for their various fund-raising projects. Trustees unanimously approved.

Coming to the Foundation Soon: Industry Specific Software

- Over the course of the year, Trustees spent a good deal of time considering and evaluating various software applications that would address the ever-increasing workload in the Foundation office, and more importantly, could provide a needed community service. The

selected web based software product will allow the Foundation to assign permissions-based, live access to sub-fund organizations and donors. The right software product will assist our sub-fund organizations by maintaining accurate and up-to-date donor databases, generating mailings, creating labels, and tracking donations and pledges, tasks that currently most sub-funds use volunteers to do manually. It will also allow events management, on-line donations, and high-level report generation. **Please watch our website for additional information and updates as this project develops!**

FOUNDATION FUN FACTS

BRF was selected as a finalist in the 1992 All America City competition. A presentation about the community was given before judges in Charlotte, North Carolina. The evaluation summary provided afterward read as follows: "Among the elements of BRF's application and presentation that most impressed the judges was the formation of the BRF Area Foundation. During the short period since its establishment, the Foundation has clearly been a strong force for beneficial change. Supplementing the Foundation's direct philanthropic gifts, its activities and very existence appear to have stimulated substantial volunteerism, in-kind donations and independent philanthropic giving. In this way, the BRF Area Foundation has helped the community reach a new level in its upward civic evolution. The giving policies of the Foundation, moreover, appear to promote a healthy, community self-help ethic."



NEW! DONOR ADVISED AND SCHOLARSHIP FUNDS



Jon & Ginger Ahl Family

Ahl's Northern Family Farms Fund

The Ahl family's love for their community led them to create the Northern Family Farms Fund in December of last year. Jon and Ginger Ahl, together with their children, Derek & Kate, Ashley & Brad, and Lindsey & Matt, support the wonderful work the Foundation does and wanted to formalize their commitment to local communities. It is their hope that the fund will be used for enriching agriculture-related education through grants and scholarships, supporting local schools and athletics programs, beautifying the community, and supporting other projects that will help local communities thrive for years to come. *Thank you, Ahl Family, for allowing the Foundation to assist you with your charitable Community Giving!*

Wilkus Family Fund

Matthew and Lindsey Wilkus (Ahl) met while they were both attending the University of St. Thomas. They currently live in Minnetonka, MN with their two children, Jackson & Allison. They own and operate their business, Wilkus Architects, and enjoy helping their clients develop beautiful commercial spaces in nearly every state in the U.S.



Matt & Lindsey Wilkus Family

Lindsey's roots run deep in this community where she graduated from BRF High School in 2002. Her connection to the area remains strong with her parents and siblings living here, and through her partnership with Northern Family Farms.

Matt and Lindsey work hard to instill a sense of community and giving back to their children by volunteering with their children's Scout Troup and the PTA. Their love for community led them to establish the Wilkus Family Fund in December of last year. The Wilkus family wants their donation to support the area's most pressing needs. Recognizing that those needs are ever changing, they felt using BRF Area Foundation would be the best way to achieve their goal. With the Foundation's great financial stewardship, and its finger on the pulse of the community, the Wilkuses feel confident that in the upcoming years their gift will be used where needed most.

Thank you, Matt and Lindsey for your generous Community Giving and for your faith in the Foundation!

Paul Millis Family Business & Legal Education Fund

a sub-fund of BRF's Educational Enrichment Fund

The BRF Educational Enrichment Fund was established in 2006. Al & Jeanette Lahmayer provided the initial contribution, with community fundraisers increasing the fund balance. The Fund's earnings are used to fund annual grant requests from teachers. Grant awards may be used for the purchase of goods and/or services that will enrich the educational and extracurricular experiences of BRF students.



Paul Millis Family

In 2009 and 2011 respectively, the Lahmayers donated funds to start the BRF EEF Music Fund and the M.C. Smallenberg Special Education Fund, which are sub-funds of the original BRF Education Enrichment Fund. Earnings from these funds fulfill grants to the various music departments within the BRF school system, and to the district's special education classes.

In January of 2020, Paul Millis made a generous contribution to start the EEF's third sub-fund. The Paul Millis Family Business and Legal Education Fund will use earnings for business and legal classes, and for business and legal associations, such as FCCLA, Moot Court, and Junior Achievement. When asked why he started the fund, Paul said "The knowledge my family and I received in the Black River school system opened many doors for us. With school budgets so tight, it seemed to be the right time to give a little back so others can potentially receive the same or similar benefit we received - and not at the teacher's expense." *Thank you, Paul, for Giving back to your Community!*

Rose Ann Klir Memorial Scholarship Fund

In 2000, Rose Ann Klir and her sister, Mary Curtis, established one of the Foundation's first scholarship funds. The James, Jr. & Anna Klir Memorial Scholarship Fund was created to honor their parents, who in 1938 started the school bus service for BRF area schools. James and Anna operated the bus service until 1951. The first scholarship award was made from this fund in 2001 and disbursements continued until 2017, when the fund was exhausted. From 2018 until 2020 Rose Klir personally donated the funds so the scholarship could continue.



The Foundation received an email from Rose's attorney in 2022. Rose had passed away on May 8th, two months shy of her 89th birthday. The BRF Area Foundation, BRF United Methodist Church and Squaw Creek Lutheran Church, were all local organizations named as beneficiaries of Rose's estate. Rose also made bequests to several non-profit organizations in the Mount Horeb area, the community she called home most of her adult life.

Rose grew up in Kenyon Valley, attending the Kenyon Valley rural grammar school, where she was inspired to become a rural schoolteacher. She attended BRF High School, graduating in 1951. She attended a two-year Rural Education course, and would later

CELEBRATING COMMUNITY GIVING

go on to earn her bachelor's degree from UW La Crosse. Rose taught elementary school in the Verona area over the course of her entire career. She began in rural schools, was the first principal of LaFollette Heights School for a short time, and finally taught 5th grade in Mount Horeb until her retirement in 1991.

Upon receipt of the disbursement from Rose's estate, Foundation Trustees could not think of a better way to honor her than by creating a scholarship fund following the same guidelines she and Mary had established for their parent's scholarship. An annual \$2,000 scholarship will be awarded to an alum of BRF High School, attending a four university, with preference given to those pursuing a degree in education. Alumni students will benefit from Rose's generous \$50,000 gift and its investment earnings for many years to come, beginning in 2023.

BRF Athletic Scholarship

When Tom Gilles passed away at the age of 45 from brain cancer, his family honored him by creating a scholarship to acknowledge athletic ability. Tom was a tremendous athlete and was named BRF High School's 1981 Male Athlete of the Year. Beginning in 2008, this scholarship provided awards to the graduating students selected as Male and Female Athletes of the Year. These annual disbursements continued until 2021 when funds were exhausted.



Jim Bible Family

Foundation Trustee, Jim Bible, realized that the Gilles scholarship was the only locally available scholarship focused on athletic achievements. As the single remaining member of the BRF Football Alumni Association, Jim dissolved that organization. He donated the balance of the association's funds, \$6,700, to the BRF Area Foundation, and requested that this money be used to start the BRF Athletic Scholarship to continue what Tom Gilles' family started. Each year a \$1,000 scholarship will be awarded to graduating students selected as BRF High School's Male and Female Athletes of the Year.

As a former BRF High School football coach, Jim feels strongly that athletic achievement should also be rewarded when students

graduate. He spoke with his children and the Bible family agreed to make a commitment to fund this scholarship once the start-up funds have been depleted. *Thank you, Jim, for donating your time, talent, and money, to Community Giving. (See page 18)*

Honoring the Memory of Paul McNulty

The cost of post-secondary education continues to rise each year, while the number of scholarship opportunities for subsequent years of education drops precipitously. Last year, recognizing this problem as a community need, the Foundation published an article in the Banner Journal. Several BRF High School graduates, now pursuing post-secondary educations and their many achievements, were highlighted.



Paul McNulty & Kristin Albrecht

After reading the article, Kristin Albrecht felt the Foundation offered a wonderful opportunity to honor her late husband, Paul McNulty, and she made a substantial contribution for alumni scholarships.

Paul, a lifelong BRF resident, passed away at the age of 55. He was born to John and Dorothy (Link) McNulty. Paul graduated from BRF High School and worked as plumber until his retirement. Paul loved the outdoors, whether it was hunting, fishing, gardening, or driving around on his ATV. For twenty years, he was continually active in the BRF Chapter of Whitetails Unlimited. Paul and Kristin married on January 31, 2004, and shared a wonderful, adventurous life together.

Whenever the lottery prize got large, Paul liked to play "what would you do with all that money?" His first response was always to say he would have a full-time job figuring out how to give it away. Kristin's hope is to, even in his absence, keep his giving spirit alive. *Thank you, Kristin, for allowing the Foundation to assist you in honoring your husband, Paul, through Community Giving.*

*Thanks to Kristin's generosity, the Trustees were able to award scholarships to eight BRF alumni students! (See pages 18 & 19)

Grant Applications

The BRF Area Foundation welcomes grant applications from non-profit organizations serving the Black River Falls Area. The grant application period is from March 1 through April 15. The announcement of award recipients and the distribution of funds are done in June.

For information about grants go to www.brfareafoundation.org or contact us at:

Black River Falls Area Foundation
PO Box 99

Black River Falls, WI 54615

Telephone: 715-284-3113

E-mail: executivedirector@brfareafoundation.org

Or contact any member of the Foundation's Board of Trustees.

Financial Statement

(For the years ending December 31, 2020 and 2021)

REVENUE	Audited 2020	2021*
Contributions	\$ 460,574	\$ 616,154
Investment Return	\$ (309,119)	\$ 78,864
TOTAL REVENUE	\$ 151,455	\$ 695,018
EXPENDITURES		
Grants	\$ 749,007	\$ 649,925
Scholarships	\$ 64,500	\$ 95,000
Support Services	\$ 51,677	\$ 53,171
TOTAL EXPENDITURES	\$ 865,184	\$ 798,096
Change in Net Assets	\$ (713,729)	\$ (103,078)
Net Assets at Beginning	\$ 6,152,567	\$ 5,438,838
NET ASSETS AT YEAR END	\$ 5,438,838	\$ 5,335,760

*Audited Financials were unavailable at the time of printing. Please direct any questions to the Foundation office.

FUNDS & DONATIONS . July 1, 2021 to June 30, 2022

- * Family added additional funds
- Individual Donors to Listed Fund

NEW! New funds created

FAMILY FUNDS

- Dougherty Family Fund
- *Tim & Kay Finch Family Fund
- Peter & Jone Hoffman Fund
- Gil & Alice Homstad Fund
- *Ahl's Northern Family Farms **NEW!**
- Mary Van Gorden Charitable
- *Wilkus Family Fund **NEW!**

MEMORIAL FUNDS

- Mike & Mona Anderson Memorial Fund
- Kay Brauner Memorial Fund
- Stanley Held Memorial Fund
- Erwin & Thelma Homstad Memorial Fund
- Bill Millis Memorial Fund
- Grace Webb Memorial Fund
 - John & Jane Lokken
- Katherine Wold Memorial Fund

SPECIFIC PURPOSE DONOR ADVISED FUNDS

- Warming Hearts Fund
 - Millis, Beverly
 - Millis, Dan & Cheryl
 - Millis, Steve & Sue
 - Pearson, Todd & Kari

COMMUNITY FUNDS

- Alma Center Area Community Fund
 - Alexander, Karen
 - Boynton, Samuel & Nancy
 - Bratz, Charles & Margaret
 - Breheim, LaVonne S.
 - Bue, Charles & Katie
 - Cleary, Mary Jane
 - Comstock, Charles & Bonnie
 - Comstock, Larry & Georgia
 - Dietzel, Gerald & Susan
 - Esser, John F.
 - Evenson, Alice
 - Fischer, Paul & Angela
 - Forsting, Kenneth & Julie
 - Forsting, Kevin & Michelle
 - Garden Valley Gatherings
 - Giese, Michael & Mary
 - Graff, Lars & Ingrid
 - Hansen, Judith
 - Hanson, Eric & Judy
 - Hanson, Michael & Kristi
 - Heller Farm, Inc.

- Hoffman Construction Company
- Holub, Leonard & Judith
- Jacobson, Ruth
- Jacobson, Jamey
- Jacoby, Ronald & Cynthia
- Janke, Charles D.
- Janke, Larry & Betty
- Johnson, Roger L.
- June, Carrie
- Laufenberg, Michael & Nicole
- Mahan, Michael & Christina
- Olson, Gaylord E.
- Prindle, Doris
- Prindle, Jacob & Nicole
- Rogers, Delbert & Heather
- Rousey, Donna
- Rousey-Frenette, Sara
- Rowekamp, Jason & Megan
- Rowekamp, Kathy
- Ruzic, Rozanne
- Security Financial Bank
- Seguin II, Norman
- Seichter, Greg & Mary
- Sheffer, Jeffrey D. & Chom Hae
- Stephens, Dean & Janet
- Stetzer, Daniel & Carla
- Strandberg, Hoyt & Jeanine
- Strawberry Square
- Szymanski, Jane
- Van Gorden, Mary

Alma Center-Humbird-Merrillan Education Enrichment Fund

- Forsting, Michelle Clark
- Szymanski, Jane

Black River Area Youth Fund

City of BRF – Public Library Fund

Developmental Disabilities Fund

Disability Association of Jackson County

- Aldach, Steven & Diane
- Bowen, Duane
- Knights of Columbus
- Musser, Nyla
- Severson, Linda M.
- Tamminen, Glen & Jean

Incubator Economic Development Fund

Skyline Funds

- BRF Rotary Club
- Co-op Credit Union
- Friends of Skyline
- Hoffman, David & Marilyn
- Hostrawser, Jim & Roxie
- Kaphengst, Jim
- Northern Family Farms
- Seguin, Norman
- Stai, Fred

MAINTENANCE FUNDS

- City of BRF – Field of Honor Maintenance Fund
- City of BRF – Public Library History Room
- Foundation Trail Maintenance Fund
 - Grosskreitz, Lee
- Hoffman Aquatic Park Maintenance Fund
 - Hoffman, David & Marilyn
- Lunda Community Park Maintenance Fund
- Mills Park Maintenance Fund
 - Howard, John & Nancy
 - Howard, Mary Alice in Honor of Nancy Mills Howard
 - Krohn, Amy in Memory of Nancy Mills Howard
- Rotary Skate Park Maintenance Fund

ORGANIZATION FUNDS

- Boys & Girls Club Fund
- BRF Educational Enrichment General Fund
 - Arndt, William
 - Autumn Ridge Holdings
 - Bible, Jim
 - BRF School District
 - Chambers, Thomas & Verona
 - Co-op Credit Union
 - DeBoer, Barry & Barbara
 - Herrmann, Carl F.
 - Higgins, Joan
 - Lund, David & Judith
 - O'Brien, Mary
 - Radcliffe, Loren & Mary Jo
 - Radke, Douglas & Barbara
 - Ransom, Gene & Judy
 - Stuart, Marion & Hofer, Alden
 - From the Class of 1970
 - Frederick, Michael & Betty
 - Hanson, Terry A. & Mary H.
 - Harelson, Tom & Patty
 - Hutchens, David & Barbara Barre
 - Konkol, Kurt
 - Nelson, Chris
 - Rykken, Elizabeth
- BRF EEF – Music Fund
 - Simonson, Leota

BRF EEF - M.C.

Schmallenberg Fund

- Hansen, Mary J. in Memory of B.J. Buske & Marie Marecek

BRF EEF – Paul Millis Family Business & Legal Education Fund **NEW!**

- Paul Millis

Jackson County Historical Society Fund

Jackson County Humane Society Fund

Rotary Club of BRF Fund

LOCAL BUSINESS COMMUNITY SERVICE FUNDS

Black River Memorial

Hospital Fund

Hoffman Construction Fund

Security Financial Bank Fund

SCHOLARSHIPS CREATED BY ORGANIZATIONS & BUSINESSES

BRF Alumni Association Scholarship Fund

- Bowen, Duane
- Boyea, Don & Roberta Vandervort
- BRF Alumni Association
- Christianson, Gary L.
- Franke, Clarice
- Gomer, Bonnie
- Heineck, Roger & Mary Wang
- Johnson, Dennis & Shirley R.
- Johnson, Victor & Betty (Gehring)
- King, Sue Emerson
- Olson, Caroline Bue
- Radke, Douglas & Barbara
- Rebarchik, Anthony
- Reichert, John & Janice
- Spangler, Vernon & Sally
- Zillmer, Bing & Kathryn
- Zillmer, Debra

BRF Area Foundation

Scholarship Fund

BRF Athletic Scholarship Fund **NEW!**

- Jim Bible Family

FOUNDATION FUN FACT

The Foundation's first scholarship award, made in 1989, was possible thanks to a joint donation from the BRF Lions and Rotary Clubs. They have continued to fund this scholarship annually for 34 years. Together the Lions Club and the Rotary Club of BRF have invested \$39,000 in our community by investing in the education of our youth!

BRF High School Store
Scholarship Fund
Security Financial Bank
Foundation Alumni
Scholarship Fund
Krohn Clinic Physicians
Scholarship Fund
• Krohn Clinic
• Mahan, Dr. Michael &
Christina in Honor of
Dr. Gary Peterson
Lions/Rotary Scholarship
Fund

**SCHOLARSHIPS CREATED
BY INDIVIDUALS &
FAMILIES**

Tim & Kay Finch Alumni
Scholarship Fund
David & Marilyn Hoffman
Alumni Scholarship Fund
Peter & Jone Hoffman Alumni
Scholarship Fund
Elizabeth Janssen Nursing
Scholarship Fund
Gerald & Nancy Laabs
Scholarship Fund
• Laabs, Jay & Katherine
Mary Perry Fine Arts
Scholarship Fund

Gene & Judy Ransom
Scholarship Fund
**SCHOLARSHIPS CREATED
IN MEMORIAL**
Allan Brenengen Memorial
Scholarship Fund - Alma
Center Lincoln High School
Don Halverson Memorial
Scholarship Fund
Duane & Lavina Hoffman
Memorial Scholarship Fund
Alice Homstad Memorial
Scholarship Fund
• Howard, John & Nancy Mills
Rose Ann Klir Alumni
Memorial Scholarship Fund
NEW!

• Estate of Rose Ann Klir
Leland & Jeanette Larson
Memorial Scholarship Fund
Ralph & Alice Lund Memorial
Scholarship Fund
Kelly Mauck Memorial
Scholarship Fund
Philip & Aldena Meyer
Memorial Scholarship Fund
• Goens, Mary J.
• Meyer, Dave & Luane
• Meyer, Marlene A.

Rick Millis Memorial
Scholarship Fund
Dean Nortman Memorial
Scholarship Fund
Meghan Powell Memorial
Scholarship Fund
Lt. Terry Preston Memorial
Scholarship Fund
Dustin Rozmenoski Memorial
Scholarship Fund
• Frett, Harold D. & Donna L.
• Medick, David & Luann
• Rozmenoski, Danny &
Mary Jo
Kristin Wood Fine Arts
Memorial Scholarship Fund
• Amundson, Vicki

**SPECIFIED TERM
SCHOLARSHIPS**
Foundation Technical School
Impact Scholarships
Richard Hilliker Scholarship
Fund
• Hilliker, Richard
Robert (Knuckles) Johnson
Memorial Fund
• Hoffman Construction
Company

Ann Krohn Peterson
Scholarship Fund
• Hilliker, Daniel
• Hilliker, Mark
• Lassen, Ron & Susan
• Mahr, Kristin Hilliker
Rotary Scholarship Fund

**FOUNDATION
FUN FACT**

Starting with \$0 in 1986, the Foundation began a campaign to raise \$125,000. Trustees felt that a fund of this size would generate about \$10,000 in annual earnings to be used for grants and would be the minimum amount needed to give the Foundation credibility and allow meaningful financial contributions to the community. Today the Foundation has over \$5 million dollars in assets.

GRANT RECIPIENTS • July 1, 2021 to June 30, 2022

\$37,184 awarded to 9 local Non-Profit Organizations

Black River Area Community Band:
Replace plywood deck, storage box and side rails of Community Band parade trailer

Bolton Refuge House; JC Outreach:
Improvements to the Homstad building; Install water, sewer laterals, add a bathroom area, replace lighting and lay laminate flooring

Boys & Girls Club of Jackson County:
Toward purchase of a new van

City of BRF; Parks & Recreation Department: Start-up costs for a capital campaign to raise \$500,000 to improve the playground at Lunda Park

City of BRF; Public Library: Youth Services & Programming to promote summer reading with a presentation by Leonardo Music and to purchase 170-180 paperback scholastic incentive books

Jackson County Agricultural Society:
Purchase a portable stage to be used at various locations during the Jackson County Fair

JC Health & Human Services; Division of Public Health; Car Seats:
Purchase safety car seats for Jackson County families in need and educational costs to maintain required installation certification status for staff

JC Health & Human Services; Division of Public Health; Beach Water Monitor:
Purchase a Quanti-Tray Sealer as part of the equipment necessary to complete the Most Probable Number (MPN) test for E. Coli in local recreational waters

Women's Sewing Circle: For Materials to make quilts to be given to those in need and to promote safe spaces for people to sleep



2022 Grant Recipient: Women's Sewing Circle "Early Morning Quilters"

Community Fund Grants

\$10,338 to fund 8 community and educational projects

Alma Center Area Community Fund

- Alma Center Improvement Club to maintain/improve Turtle Pond and Turtle Pond Park
- Alma Center Community Fire District to maintain and improve AC Community Fire District Equipment
- Lincoln Elementary School for PBIS
- Will Prindle Project for suicide prevention and awareness

From Schroeder Family Charitable Gift

- Alma Center Community Fire District
 - ◊ Radio, Batteries, Installation
 - ◊ First Aid Equipment

BRF Educational Enrichment Fund
2021 Grants are listed in their entirety in the Foundation's 2020 Annual Report. Their 2022 Grants will be listed in the July 1 2022 to 2023 June 30 Annual Report.

GRANT RECIPIENTS • July 1, 2021 to June 30, 2022

Donor Advised Disbursement

\$467,645 awarded to 26 Different Local Non-Profit Organizations

Kay Brauner Memorial

- Western Technical College Student Emergency Assistance Scholarship Fund

City of BRF - Field of Honor Maintenance Fund

- Karner Blue Garden Club for maintenance of flowers at park

City of BRF - Foundation Trail Maintenance Fund

- City of BRF for repair to walking bridge by the Chamber building

Disability Association of Jackson County Fund

- Provide party supplies for seasonal events for disabled citizens

Tim & Kay Finch Family

- Alma Center VFW Post 8494
- Black River Falls Area Foundation for computer hardware and industry specific software
- Black River Falls VFW Post 1959
- Bolton Refuge House
- Boys & Girls Club of Jackson County
- BRF Evangelical Lutheran Church – Foster Care Closet Program to support two new programs; advertising and marketing needs; purchase items that must be new such as socks and undergarments
- City of BRF - Fire Department to purchase mounting brackets and equipment for the new structural firefighting engine.
- Friends Sharing Food
- Hanson Lien Post 368 VFW (Hixton) to replace 152 square feet of kitchen flooring at the Legion Hall

- Hixton Fire & Rescue Department to purchase replacement battery and gas powered tools and portable scene lighting to equip their truck
- Jackson County Interfaith Volunteer Caregivers
 - ◊ for the building fund
 - ◊ for the emergency fund
 - ◊ for operating expenses
- Melrose Volunteer Fire Department to replace 1,000 feet of fire hose to be equipped between two fire engines and tanker. NFPA regulates fire hose use based upon age, environmental factors, usage, and testing.
- Village of Alma Center Fire Department to purchase new batter-operated vehicle extraction equipment (Jaws of Life)
- Village of Merrilan Fire Department

Peter & Jone Hoffman Fund

- BRF United Methodist Church
- Boys & Girls Club of Jackson County
- JC Interfaith Volunteer Caregivers for building fund

Carl Herrmann & Joan Higgins

- BRF Educational Enrichment Fund
- Boys & Girls Club of Jackson County
- General Grant Fund

Gil & Alice Homstad Fund

- BRF School District for winter coats for children in need
- JC Interfaith Volunteer Caregivers for building fund

Jon & Maureen Homstad

- JC Interfaith Volunteer Caregivers for building fund

FOUNDATION FUN FACT

Since 1987, the Foundation has awarded more than 800 Grants to 119 diverse, local, non-profit organizations, totaling more than \$6.7 million dollars!

John & Nancy (Mills) Howard

- City of BRF Public Library – Children's Section
- JC Historical Society
- Mills Park Maintenance Fund
- Alice Homstad Memorial Scholarship

Ahl's Northern Family Farms Fund

- JC Interfaith Volunteer Caregivers for building fund
- Skyline Club House for bar renovation project (See picture page 23)

'Swing for Students Golf Event' Temporary Fund

- BRF School District for enhancements within Music and Choir Classes
- BRF Parent Teacher Organization

Mary Van Gorden Funds

- City of BRF - Library History Room

Warming Hearts Fund – Jim & Kathy Powell

- JC Health & Human Services - Children & Families Division to purchase Christmas gifts for children in need living in Foster Care

Grace Webb Memorial Library Fund

- Black River Falls School District: Elementary Library to enhance the joy of reading for younger children



2021 Grant Recipient: City of BRF Spaulding Road Community Garden to replace the north entry gate.



2021 Grant Recipient: Jackson County Crime Stoppers for promoting their new program. Pictured: Claudia Fields (L) and Janell Smokowicz (R).



2022 Grant Recipient: Hanson-Lien American Legion Post 368 Hixton for a new kitchen floor.

2022 SCHOLARSHIPS & RECIPIENTS

A Scholarship Fund created by gifts from individuals, organizations and businesses, awards education grants to selected area students. The following **64** scholarships totaling **\$124,000** were awarded from **31** of the Foundation's Scholarship Funds, together with a generous 2021 donation from Kristen Albrecht in memory of her husband, Paul McNulty.*

Black River Falls Alumni Association Scholarship (\$1,500)

David & Marilyn Hoffman Scholarship (\$2,000)

Madysen McCormick
(2019 BRF Graduate)

Black River Falls
Attending: Mayo Clinic
School of Health Sciences
Course of Study: Biology-
Health Sciences/Master's for
Physician Assistant
Career Path: Physician Assistant in an area of need



Black River Falls Alumni Association Scholarship (\$1,500)

David & Marilyn Hoffman Scholarship (\$2,000)

Ashley Rush
(2019 BRF Graduate)

Black River Falls
Attending: UW Oshkosh
Course of Study: Elementary
Education
Career Path: Elementary Teacher



Black River Falls Alumni Association Scholarship (\$1,500)

Security Financial Bank Foundation Alumni Scholarship (\$2,000)

Jessica Olson
(2019 BRF Graduate)

Black River Falls
Attending: Viterbo University
Course of Study: Accounting
Career Path: Accountant for a Small Business



Black River Falls Alumni Association Scholarship (\$1,500)

Kasey Roskos
(2018 BRF Graduate)

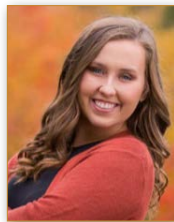
Black River Falls
Attending: UW Eau Claire
Course of Study: Elementary
Education & Special
Education
Career Path: Special Education
Teacher at Red Creek Elementary



BRF Area Foundation Annual Alumni Scholarship (\$2,000)

Cassidy Boerger
(2020 BRF Graduate)

Black River Falls
Attending: UW Eau Claire
Course of Study:
Communication Sciences
and Disorders
Career Path: Speech and
Language Pathologist



BRF Area Foundation Annual Senior Scholarship (\$2,000)

Robert Cogswell
Black River Falls
Attending: North Dakota
State University
Course of Study: Civil
Engineering
Career Path: Civil Engineer



BRF Area Foundation Impact Scholarship (\$1,000 per semester up to 4)

Faith Leisgang
(2021 BRF Graduate)

Black River Falls
Attending: Chippewa Valley
Technical College
Course of Study: Digital
Marketing and Business
Management
Career Path: Work in Eau Claire Area as a Digital
Marketer



BRF Area Foundation Impact Scholarship (\$1,000 per semester up to 4)

Danielle Johnson
(2021 BRF Graduate)
Black River Falls
Attending: Western Technical
College
Course of Study: Digital Media
Production
Career Path: News Video Editor



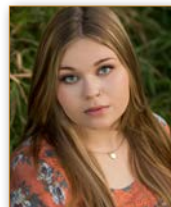
BRF Area Foundation Impact Scholarship (\$1,000 per semester up to 4)

Rosemary Baugh
(2019 BRF Graduate)
Black River Falls
Attending: Chippewa Valley
Technical College
Course of Study: Nursing
Career Path: To return to BRF
and work as an RN



BRF High School Store Scholarship (\$500)

Chloe Olson
Black River Falls
Attending: UW River Falls
Course of Study: Elementary
Education
Career Path: Work as an
Elementary Teacher



Allan Brenengen Memorial Scholarship (\$1,500)

Keegan Holman
Alma Center
Attending: Western Technical
College
Course of Study: Associate of Arts
Career Path: Physical Education
Teacher



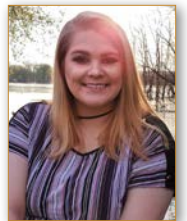
Tim & Kay Finch Alumni Scholarship (\$2,000)

McKenna Dutton
(2021 BRF Graduate)
Black River Falls
Attending: UW Platteville
Course of Study: Health and
Human Performance/
Physical Education
Career Path: High School
Physical Education Teacher



Tim & Kay Finch Alumni Scholarship (\$2,000)

Abigail Nelson
(2020 BRF Graduate)
Black River Falls
Attending: UW Milwaukee
Course of Study:
Major-Video Production;
Minor-International
Business
Career Path: Music Video
Director



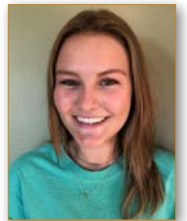
Tim & Kay Finch Alumni Scholarship (\$2,000)

Erin Rodenberg
(2015 BRF Graduate)
(2020 UW Eau Claire Cum
Laude Graduate with BS in
Psychology)
Black River Falls
Attending: University of
Western States (Second
year Grad School)
Course of Study: Master of Applied Sport and
Performance Psychology
Career Path: Certified Mental Performance
Consultant



Tim & Kay Finch Alumni Scholarship (\$2,000)

Alyssa Stemper
(2020 BRF Graduate)
Black River Falls
Attending: Winona State
University
Course of Study: Majors:
Nursing
Career Path: Work as a Nurse
Practitioner



Tim & Kay Finch Alumni Scholarship (\$2,000)

Eric Wojtalewicz
(2020 BRF Graduate)
Black River Falls
Attending: UW Green Bay
Course of Study: Major-
Psychology; Minor-Biology,
Criminal Justice & Dance
Career Path: Forensic
Psychiatrist



*See article page 13

2022 SCHOLARSHIPS & RECIPIENTS

Don Halverson Memorial Scholarship (\$1,500)

*BRF Athletic Scholarship (\$1,000)

Michael Rooz

Black River Falls
Attending: UW La Crosse
Course of Study: Business
Career Path: Real Estate Developer



David & Marilyn Hoffman Scholarship (\$2,000)

Jeremiah Rumsey

(2019 BRF Graduate)
Black River Falls
Attending: UW Eau Claire
Course of Study: Double Major – Economics & Finance
Career Path: Financial Advisor



*BRF Athletic Scholarship (\$1,000)

Duane & Lavina Hoffman Scholarship (\$1,500)

Makayla Nortman

Black River Falls
Attending: Viterbo University
Course of Study: Accounting
Career Path: Work as an Accountant



Duane & Lavina Hoffman Scholarship (\$1,500)

Gabriella Bernabei-Grassi

Black River Falls
Attending: UW Eau Claire
Course of Study: Music Education
Career Path: High School Music Teacher



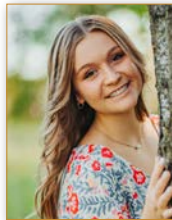
Duane & Lavina Hoffman 2022 Bonus Scholarship (\$2,000)

Leland & Jeanette Larson 2022 Bonus Memorial Scholarship (\$2,000)

*Paul McNulty Memorial Senior Scholarship Award (\$1,000)

Summer Rufsholm

Black River Falls
Attending: UW LaCrosse
Course of Study: Business Management
Career Path: Business related career



Peter & Jone Hoffman Alumni Scholarship (\$2,000)

Emma Bible

(2019 Graduate)
Black River Falls
Attending: UW Whitewater
Course of Study: Marketing with an Emphasis in Professional Sales
Career Path: Working in the Sales & Marketing Industry



*See articles page 13

Peter & Jone Hoffman Alumni Scholarship (\$2,000)

Zoe Dal Cerro

(2020 BRF Graduate)
Black River Falls
Attending: New York University
Course of Study: Environmental Economics
Career Path: Environmental Law/Communications



Peter & Jone Hoffman Alumni Scholarship (\$2,000)

Noah O'Brien

(2019 Graduate)
Black River Falls
Attending: UW Eau Claire
Course of Study: Social Work Certificate in Social Diversity & Gerontology
Career Path: Social Worker for Veterans, Abused Women or AODA



Peter & Jone Hoffman Alumni Scholarship (\$2,000)

Sydney Sampson-Webb

(2019 Graduate)
Black River Falls
Attending: UW Milwaukee
Course of Study: BBA in Marketing with a Communication Minor
Career Path: Search Engine Optimization (SEO), Digital Marketing, Bakery Owner



Peter & Jone Hoffman Alumni Scholarship (\$2,000)

Eleanor Wirtz

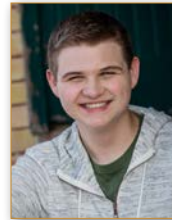
(2021 BRF Graduate)
Black River Falls
Attending: UM Twin Cities
Course of Study: Journalism/Strategic Communications
Career Path: Journalist; Public Relations Specialist



Alice Homstad Memorial Scholarship-Year 2 of 2 (\$2,500)

Caleb Laufenberg

(2020 BRF Graduate)
Hixton
Attending: UW Eau Claire
Course of Study: Environmental Public Health
Career Path: Epidemiologist



Alice Homstad Memorial Scholarship-Year 1 of 2 (\$2,500)

Graham Rockowski

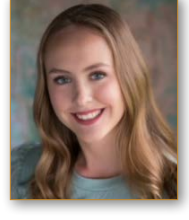
(2021 BRF Graduate)
Black River Falls
Attending: Missouri University of Science & Technology
Course of Study: Aerospace Engineering
Career Path: Working in the Space Industry designing Thrusters for spacecraft.



Richard Hilliker Scholarship (\$2,000)

Abigail Hill

(2021 BRF Graduate)
Black River Falls
Attending: UW River Falls
Course of Study: Conservation & Environmental Planning
Career Path: Wildlife Conservation & Management



Elizabeth Danielson Janssen Nursing Scholarship (\$2,000)

Ellen Janke

Black River Falls
Attending: UW Eau Claire
Course of Study: Nursing
Career Path: Registered Nurse



Krohn Clinic Physicians Scholarship (\$2,000)

Hope Roskos

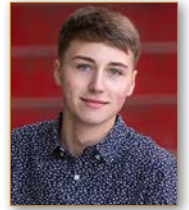
Black River Falls
Attending: Chippewa Valley Technical College
Course of Study: Nursing
Career Path: Nurse Practitioner/ Obstetrical Nurse



Gerald & Nancy Laabs Alumni Scholarship (\$2,000)

Kyle Gilbertson

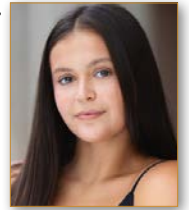
(2021 BRF Graduate)
Black River Falls
Attending: UW Madison
Course of Study: Double Major- International Studies & Spanish
Career Path: Consulting (International/Environmental)



Gerald & Nancy Laabs Senior Scholarship (\$2,000)

Paige Blackdeer

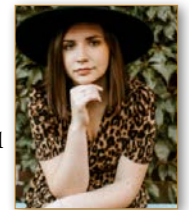
Black River Falls
Attending: UW Madison
Course of Study: Environmental Science
Career Path: Research



Leland & Jeanette Larson Memorial Scholarship – Taylor (\$2,000)

Madyson Schultz

Taylor
Attending: Western Technical College
Course of Study: Nursing
Career Path: Work as a Nurse



Leland & Jeanette Larson Memorial Rotating Scholarship – ACHM (\$2,000)

Lily Nichols

Hixton
Attending: UW Madison
Course of Study: Biology/Chemistry
Career Path: Dentist



2022 SCHOLARSHIPS & RECIPIENTS

Lions/Rotary Scholarship (\$2,000)

Gabrielle Pardoe

Black River Falls
Attending: UW River Falls
Course of Study: Pre-Veterinarian/Animal Science
Career Path: Veterinarian



Ralph & Alice Lund Memorial Scholarship (\$1,000)

Mary Perry Fine Arts Scholarship (\$1,000)

Lauren Lund

Black River Falls
Attending: UW Stout
Course of Study: Graphic Design
Career Path: Art Director (Focus on Visual Style)



Kelly Mauck Memorial Scholarship (\$1,500)

Mackenzie Dougherty

Black River Falls
Attending: UW Eau Claire
Course of Study: Elementary Education
Career Path: Elementary Teacher



*Paul McNulty Memorial Alumni Scholarship Award (\$2,000)

Gabriella Antonelli

(2021 BRF Graduate)
Black River Falls
Attending: Viterbo University
Course of Study: Major - Biology; Minor - Business
Career Path: Orthodontist and Dental Office Owner



*Paul McNulty Memorial Alumni Scholarship Award (\$2,000)

Quinn Cerda-Reyes

(2021 BRF Graduate)
Sparta
Attending: UW Eau Claire
Course of Study: Criminal Justice
Career Path: Cybersecurity and Detective Work



*Paul McNulty Memorial Alumni Scholarship Award (\$2,000)

Isabella Cowles

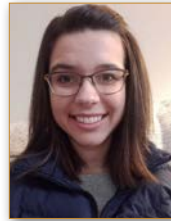
(2020 BRF Graduate)
Black River Falls
Attending: North Central University, Minneapolis, MN
Course of Study: Secondary Communication Arts Education
Career Path: High School English Teacher in a Public School



*Paul McNulty Memorial Alumni Scholarship Award (\$2,000)

Natalie Gawron

(2016 BRF Graduate)
UW Oshkosh Cum Laude Graduate - Human Biology
Black River Falls
Attending: UW Oshkosh
Course of Study: Nursing
Career Path: Obtain BSN and later Nurse Practitioner



*Paul McNulty Memorial Alumni Scholarship Award (\$2,000)

Sarah Guenther

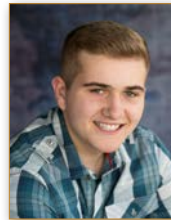
(2019 BRF Graduate)
Black River Falls
Attending: UW LaCrosse
Course of Study: Major - Psychology; Minor - Anthropology
Career Path: Licensed Therapist



*Paul McNulty Memorial Alumni Scholarship Award (\$2,000)

Jared Laufenberg

(2018 BRF Graduate)
Hixton
Attending: UW Eau Claire
Course of Study: Double Major - Marketing & Management
Career Path: Business



*Paul McNulty Memorial Alumni Scholarship Award (\$2,000)

Reese Vold

(2018 BRF Graduate)
Black River Falls
Attending: UW Stout
Course of Study: Major - Packaging; Minor - Sustainability
Career Path: Packaging Engineer in the Medical or Food & Beverage Industry



Philip & Aldena Meyer Memorial Scholarship (\$1,000)

Annelise Swiggum

Black River Falls
Attending: UW Stout
Course of Study: Elementary Education
Career Path: Elementary Special Education Teacher



Rick Millis Memorial Scholarship (\$3,000)

Robert (Knuckles) Johnson Memorial Scholarship (\$1,500)

Meghan Powell Memorial Scholarship (\$1,500)

Trystyn Hoffman

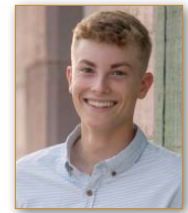
Hixton
Attending: UW Madison
Course of Study: Accounting & Finance
Career Path: Undecided



Philip & Aldena Meyer Memorial Bonus Scholarship (\$1,000)

Michael Antonelli

Black River Falls
Attending: UW Madison
Course of Study: Biochemistry
Career Path: Family Physician



Rick Millis Memorial Scholarship (\$3,000)

Taylor Stanley

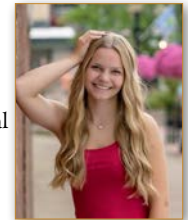
Humbird
Attending: Chippewa Valley Technical College
Course of Study: Nursing
Career Path: Registered Nurse with Obstetrics Specialty



Dean Nortman Memorial Scholarship (\$1,500)

Betsy Olson

Black River Falls
Attending: Western Technical College or College of Eastern Idaho
Course of Study: Radiology Technician or Registered Nurse
Career Path: Work in a Health Care Facility



Ann Krohn Peterson Scholarship (\$2,000)

Sam Lund

(2020 BRF Graduate)
Black River Falls
Attending: UW Eau Claire
Course of Study: Social Studies Education
Career Path: Teacher at a High School or a University



Lt. Terry Preston Memorial Scholarship (\$1,000)

Nathan Marecek

Black River Falls
Attending: UW LaCrosse
Course of Study: Forensic Science, Criminology, Criminal Justice
Career Path: Join a Policing Academy and become a Crime Scene Investigator or Detective



Gene & Judy Ransom Scholarship (\$2,000)

Isabella Marie Heredia

Alma Center
Attending: UW Eau Claire
Course of Study: Undecided
Career Path: Find my Interests and pursue them



Dustin Rozmenoski Memorial Scholarship (\$1,000)

Blake Williams

Black River Falls
Attending: Western Technical College
Course of Study: Basic Welding
Career Path: Welding & Alaskan Fishing Guide



*See article page 13

Board of Trustees

The Board of Trustees is the governing body of the Black River Falls Area Foundation. It is responsible for overseeing the investment of donor funds and the distribution of grants in accordance with donors' wishes. Trustees serve without compensation and are selected because of their judgment, integrity, community involvement, and understanding of philanthropic needs. They serve a three-year term of office with a maximum of three consecutive three-year terms. The Chairman, Vice Chairman and Treasurer can serve additional terms.



Kay Finch
Chairman



David Hoffman*
Vice Chairman



Michael Dougherty
Co-Treasurer



Ashley Ahl
Co-Treasurer



Kristi Hanson
Secretary



Brad Chown



Jim Bible



Nicholas
Kitowski, M.D.



Shelly Severson



Dennis Young



Mary Beth
White-Jacobs



Gil Homstad*
Chairman Emeritus



Julie Murray,
Executive Director

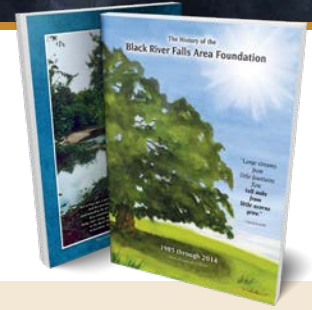
Former Trustees

*Originating Trustee

Todd Anderson
Ruth Buswell
Eric Chrisinger
Ron Danielson
John Hagenbrock
Judy Hansen
John Hogden

Jerry Kitowski, MD
Al Lahmayer*
Jean Lee
Tom Lister*
John Lund*
Mike Mahan, MD
Sue Michaelson

David Millis
Mary O'Brien
Dennis Richards*
Dale Sherman*
Fred Stai
Tom Mills—
Executive Secretary
from 1985 to 1999



The Foundation's History Book is available at no cost. Contact Julie Murray at the Foundation office executivedirector@brfareafoundation.org or 715-284-3113.

Mission Statement

The mission of the Black River Falls Area Foundation is to enhance the quality of life in the Black River Falls Area. We work to realize that goal with the support of individuals, families, businesses and organizations that share this commitment. We achieve this by:

- Providing a vehicle for donors with diverse community interests;
- Protecting donations through prudent investing and stewardship;
- Serving as a resource and catalyst to accomplish community projects;
- Expanding our communities' endowment by encouraging philanthropy.

We address a broad range of community goals rather than focusing on one particular issue. In this way, we are able to meet changing needs and provide support to the people who live and work in the Black River Falls Area.

"Special People" Award Recipients

2015: Bee Herzberg
2016: Peter & Jone Hoffman
2017: Bill Millis
2018: Al & Jeanette Lahmayer
2019: Mary Van Gorden
2022: Gil Homstad

SKYLINE is CELEBRATING ~ 65 YEARS!

IN MEMORY OF FRED STAI, BRF Area Foundation Trustee 2002 to 2011

Fred Stai passed away on July 29, 2022. Fred was not only a devoted family man and friend, he was very dedicated to the betterment of his community. Fred served nine years as a Foundation Trustee. He also volunteered his services extensively in service of Skyline Golf Course. For his many contributions Fred received the Skyline Service Award. From 1991 until the time of his death, Fred was the acting 'Keeper of the Skyline Archives'. In 1997, Fred and his daughters created a book called 'Skyline Golf Course - The First Forty Years'. The following synopsis is taken from that book. On behalf of the Community, Thank you Fred, you will be missed.



A Back Alley Conversation

The history of Skyline Golf Course as we know it today, began in 1955 when Art Frederikson, operator of Frederikson's Meat Market was standing in the alley outside the back door of his shop at 130 Main Street. His neighbor, Louis Gardipee, owner of the Gambles Store, which was located in the Dell building, was also in the alley. Art started a conversation, "What this town needs is a golf course." Louis, who was serving as Chamber of Commerce President that year, responded, "I think that's a good idea. Why don't you go ahead and get it going."

The first meeting to determine the feasibility of establishing a golf course was held at Al Lahmayer's residence in November of 1955. Present were Jim Dougherty, Art Frederikson, Duane Hoffman*, Robert Krohn, Al Lahmayer, Bob McGillivray, Tom Mills and Bill Wilcox. The meeting participants decided to conduct a study of public interest and obtain a preliminary cost estimate.

The Banner Journal was a strong advocate for the construction of a golf course. On the 4th of July, 1956, they printed an article called "An Action Project" emphasizing all the things the golf course would NOT be, "It is not just something to do on a Sunday or on a day off. It's not just something beautiful to show off to visiting friends and relatives, nor is it an opportunity for just an occupation away from the kitchen, the lawnmower, and the garden. It's not something to be enjoyed only by the people with money whose homes were paid for ten years ago, nor is it something to be enjoyed solely by the male of the species, nor will it be limited to grownups. It WILL be a long-term investment in community betterment."

Bill Wilcox, who had taken responsibility for evaluating the economic feasibility of a golf course, developed a preliminary estimate of \$20,200 for a nine-hole course. By February 1959, members of the BRF Rotary Club pledged \$9,145 to the project. Meanwhile, the BRF Lions Club had \$5,000 in its treasury earmarked for a community development project. Money in this fund had accumulated from the immensely popular club-sponsored stock car races held at the fairgrounds in the early 1950's. Evidently the Lions Club had been looking for an appropriate project for some time as evidenced by Art Upton's motion that, "Whomever we give the money to has to promise not to give it back as we've had so much trouble getting rid of it in the first place."

Duane Hoffman and Tom Mills were responsible for assessing potential sites for the new course. A total of eight locations were considered, some of which included the Rozmenoski property, now known as Lollapalooza; the Scafe property, where the Black River Memorial Hospital and Krohn Clinic are now located; the Hanson property, located near the junction of County Trunks C and P; and the Trask Ridge property, located off County A, in the area of the WWIS radio station. The property finally selected was 118 acres known as the Trask Town Creek property and was purchased in December of 1956 for \$8,000.

Golfing in Jackson County ~ a Long and Colorful History

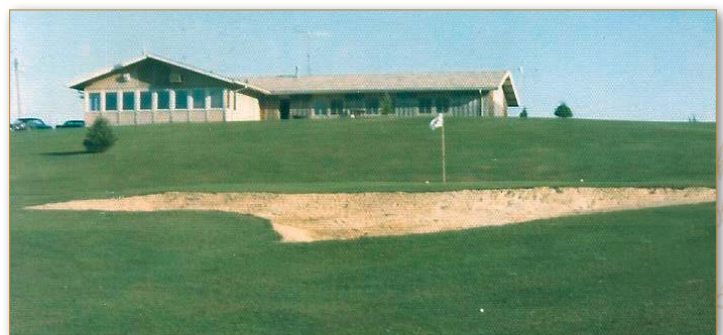


I Hit a Water Ball, in Levis Creek?

Beginning in 1921 golf was played at the BRF Country Club, which was located on land north of the existing Industrial Park, in the Town of Brockway. Originally the course consisted of six holes, "so golfers wanting to play 'eighteen' had to play the course three times." Three more holes were added in the Levis Creek bottom on the north side of the course in the late 1930's. Although this addition made the course the standard nine holes, many of the older golfers were known to not like the "hillier" course, so some continued to play only the top six holes. For fifty cents a golfer could play all day.

A section of Highway 54 now cuts across what was the northwest corner of the course. There was a building located nearby that many remember as the Cherokee Club, and later the Rainbow Club. This building was originally a house built by E. J. Vaudreuil who was attempting to establish a town in this area of Brockway during the early 1900's. This venture was not successful, and the house sat empty until the BRF Country Club started using it as a clubhouse in the 1920's. Due to prohibition, however, liquor was not served at the clubhouse until the early 1930's. In the early 1940's the BRF Country Club, which was originally owned by public stockholders, was sold to private individuals.

By 1940 use of the course was declining as many men were entering military service in anticipation of war. It was not uncommon for golf courses throughout the country to either close or cut back from eighteen to nine holes during the war years. By the mid-1940's the course had closed.



SKYLINE is CELEBRATING ~ 65 YEARS!



BRF's First Community/Recreation Center?

The golf course was originally envisioned as a recreation center with many activities available in addition to golf. Some of the other activities suggested were, an archery range and course, horseshoe pits, a picnic area and playground, a baseball diamond, and winter activities such as bobsledding, skating, and downhill skiing (\$150 for "ski tow - pulleys and rope" was included in the original golf course estimate). In 1956, a Banner Journal article entitled "Our Golf Score" extolled the benefits a Recreation Center could offer the community, "The little boy with the sun-browned arms that carries the golf bag from tee to tee will think that BRF is a much better city than it used to be, so will the weary housewife, who will welcome a few hours in a pleasant surrounding not too far from home 'with the girls.' That retired old gentleman down the street, who though he never learned to golf, might enjoy including the 'Reck Center' in his morning constitutional walk. Tourists, salesmen, and visitors might enjoy hanging around a little longer to enjoy it and spend their money locally instead of elsewhere."

In the end, the idea for the Community/Recreation Center was dismissed. It turned out that there was not enough room to accommodate many activities other than golf.

Skyline Golf Course is Born!

September 1, 1956, Hoffman Construction Company began construction of the Golf Course. It took them about one month to do the major earth moving. Duane Hoffman provided and operated the heavy equipment for a fraction of the actual cost. Many local businesses donated time and resources to the construction process. Cliff Nelson of Nelson Construction (now Lunda Construction) donated his work on the topographical map. Roberts Irrigation furnished all the water pipes at cost. Volunteer workers did non-machine work by hand, including work on greens, approaches, and tee-offs. Thousands of man-hours were donated by scores of people.

A "Name the Golf Course Contest" was held in June of 1957. Mrs. Norman Rommel of Melrose won a set of golf clubs for her suggestion, Skyline Golf Course. Although she had never golfed, she said she would begin lessons immediately. The official opening of the course occurred on August 11, 1957. Events included an exhibition tournament featuring top golfers from La Crosse, an archery competition, and a horse-shoe contest. BBQ chicken was served and there was a playground for children. (The archery range and course, horseshoe pits, picnic tables, and playground equipment were eventually moved to other sites in the area.)

The first temporary clubhouse was originally a privately owned garage which was, at the time, located near the #2 green. In 1960 ground was broken for a permanent clubhouse (in its present location). In addition to use by golfers, the clubhouse was intended to provide a place for people in the community to hold meetings, banquets, parties, etc. The first clubhouse, opened in August of 1961, did not have a bar and was open during the golfing season

only. In 1969 the screened porch was replaced with a bar. At the same time the kitchen was expanded, and the pro shop was added. A new screened porch was added to the building in 1979, and a walkway connecting the bar directly to the dining room was added in 1980.

'The Back 9' ~ Foundation Acts as Caddy

In 1979, a nine-hole expansion was first evaluated. At that time, a decision not to expand was made, primarily because there were problems acquiring suitable land. In the Spring of 1986, a committee comprised of Norm Swanson, Ken Olson, and Fred Stai began to reevaluate the project. That summer, Gil Homstad and Bill Millis were added to the committee. By October, Rye Bluff Corporation had agreed to donate the needed twenty-five acres to the City of BRF. BRF City Council created a Golf Course Expansion Commission (GCEC) in 1988, with Gil Homstad serving as Chairman of the Finance and Pledge Drive. The initial estimate for expanding Skyline Golf Course to eighteen holes was \$250,000. The plan was to finance the expansion with voluntary contributions and increased membership and green fee revenues. The BRF Area Foundation assisted the fundraising effort by agreeing to manage the incoming pledges so that the donations would be tax deductible.

At the May 2, 1988, City Council meeting, Foundation Chairman Gil Homstad and Trustee Tom Lister reported that not only had five-year pledge goals been attained, but they were significantly exceeded. A ribbon cutting ceremony for the back-nine led the Grand Opening Celebration on Saturday, July 14, 1990. Approximately two hundred golfers played the new course. For a \$15 entry fee, participants received a chicken dinner and a gift bag containing golf items.



New Maintenance Shed - 2020

To Build, or Not To Build?

In 1992 a committee was formed to discuss the clubhouse situation. They considered two options: 1) make changes to the existing building, and 2) construct a new building. After many meetings and discussions, the committee recommended, and the membership approved the construction of a new club house. The BRF Area Foundation again assisted with the fund raising and record keeping aspects of the project. On October 2, 1995, the old clubhouse was burned to the ground. Construction began, and the new clubhouse was opened on the first weekend of June, marking the start of the 1996 golf season.

Since then, several improvements have been made to the Skyline facilities. In 2019, Bev Millis donated funds for a lovely seating area over-looking the 'back nine', to be constructed in her late husband, Bill's honor. The following year, Bev and her children again honored their husband and father by donating funds through the Foundation for the construction of a new maintenance shed at the course. Bill Millis was a life-long Skyline supporter and was



Bill Millis Memorial Overlook area. "Fore Bill Millis golf is not about the score you shoot but the people you play with." - 2019.



instrumental in the addition of Skyline's second nine holes. He did everything from working on the land acquisition committee, to operating his bulldozer during construction.

When David (Dubs) Young passed away, the Foundation was able to help his family and friends create a memorial fund for him. (See related story on Page 10) Funds were raised in a short time, construction began, and the Grand Opening of Skyline's "Dubs Young Memorial Deck" was held on June 25, 2022.

Early in 2022, the Ahl Family became aware of needed renovations in the bar area of Skyline. Through the Foundation, Northern Family Farms donated the funds, and the newly updated bar was open for business by early spring.



Skyline Club House bar renovation project - 2022

Major Return on Investments!

Although Skyline failed to become a 'Community/Recreation Center,' today it offers the community much more than just golf and golfing tournaments (of which there are many). The course itself is used for BRF High School Cross Country running events, snowmobiling, sledding, and groomed trails for cross-country skiing and snowshoeing. Skyline's Club House benefits the community by offering a gathering place for more than 350 events per year, including meetings, weddings, clubs, fundraisers, and many other celebrations.

The History of Alcohol at Skyline

Duane Hoffman reportedly stated at the very first meeting in 1955, "If you want to build a golf course, I'll help you. If you want to build a tavern, good luck." Archie and Alice Trask were owners of the property which would eventually become the Skyline Golf Course. It is interesting to note that Mrs. Trask felt strongly that there should be no consumption of alcoholic beverages at the golf course. She reportedly stated, "I'll never sign that deed until they put a 'no liquor' clause in the purchase agreement." Duane Hoffman responded, "I'm just as dry as you are, but let them do what they feel they have to do. For now, it will be dry." Alcoholic beverages were not served at the course during the first three years of operation. In 1960, the Skyline Board of Directors voted to allow the use of alcoholic beverages, just prior to the opening of the first official club house.



In March 2022, a crew of volunteers began tearing down the old Skyline deck and constructing the new one. The Dave "Dubs" Young memorial deck dedication was held June 25, 2022.



FRIENDS OF THE FOUNDATION RECOGNITION PROGRAM



**BLACK RIVER FALLS AREA
FOUNDATION**

Bronze~\$100 Silver~\$500 Gold~\$2,000 Platinum~\$5,000 Diamond~\$10,000

Leaders Circle~\$15,000 Legends Circle~\$20,000 Founders Circle~\$30,000

The Foundation has established a permanent Recognition Program for Friends who have donated so generously through the years. The program allows donation amounts to accumulate each year as Friends advance through eight giving levels.

2022 FRIENDS OF THE FOUNDATION

are listed below, together with the current level of giving they have achieved.

BRONZE (\$100 & up)

- * Albrecht, Kristin
- Chown, Lori
- * Clarke, Tyson
- * Foust, Karen
- * Heineck, Mary
- * Heineck, Roger
- * Herzberg, Bee
- * Herzberg, Bill
- * Homstad, Eileen Barrett
- * Homstad, Richard (Rik)
- Jelinek, Danny
- Jelinek, Mary Jo
- Kertis, Jeanette
- Louis, Jean
- * Lund, Sharon
- * Nelson, Mindy
- * Northwoods Vet Service
- Peterson, Ann Krohn
- * Peterson, Waldo
- River Country Fitness
(Tammy Stemper)
- * Trebatoski, Alex

SILVER (\$500 & up)

- Arndt, William
- Baker, Mona
- Black River Area
Chamber of Commerce
- Brauner, Mike
- Button, Georgia
- Button, Larry
- Chown, Brad
- Curtis, Mary
- Dickman, Annette

- Dougherty, Carol (Jim)
- Dressler, Axel
- Gaier Construction Company
- Galston, Don
- Hansen, Judith
- Hansen, Mary J.
- Hanson, Kristi
- Haugen, Carol
- * Herrmann, Carl F.
- * Higgins, Joan B.
- Hilliker, Richard
- Hoefler, Alden (Buz)
- * Homstad, Ann
- Jacobs, Peter
- Kertis, Jim
- Lahmayer, Barb
- Lahmayer, Bruce
- Martin, Dr. Carol
- Meyer, Dave
- Meyer, Luane
- Musser, Nyla
- Overman, Lynda
- Polzin, Dr. Jeff
- Polzin, Susan
- Reid, Arlene
- Reid, Thomas
- Ripp Distributing Co., Inc.
- Ripp, Paul
- Ripp, Theresa
- Severance, Jay
- Simonis, Barb
- Stuart, Marion
- Tamminen, Jean
- Torkelson, Sherri

- Torkelson, Tim
- Turk, Timothy M.
- Wester, Mitch
- Wester, Sue
- White-Jacobs, Mary Beth
- Young, Alice
- Young, Dennis
- Louis, John
- Mack, David

GOLD (\$2,000 & up)

- Ackerson, Marilyn
- Coldwell Banker -
River Valley Realtors
- Delebo, Dr. Donald
- Dickman, Dr. James
- Hagenbrock, Jean
- Hoffman, David
- Hoffman, Marilyn
- Homstad, Jon
- Homstad, Maureen
- Kitowski, Dr. Jerry
- Kitowski, Lori
- Krohn, Dr. Eugene
- Krohn, Janet
- Lahmayer, Al
- Lahmayer, Jeanette
- Lee, Jean
- Michaelson Jr., Max
- Michaelson, Sue
- Mills, Carla
- Norgaard Insurance Agency,
John & Jane Norgaard
- Overman, Dr. Jerry

- Perry, Mary
- Print Shop, Bill & Kathy Potter
- Ransom, Gene
- Ransom, Judy
- Sedelbauer, Norbert
- Tamminen, Glen
- Van Gorden, Mary

PLATINUM (\$5,000 & up)

- D & S Manufacturing
- Homstad, Gil
- Dr. Nick Kitowski Family
- Wiste, Roger

DIAMOND (\$10,000 & up)

- Co-op Credit Union
- Northern Family Farms,
The Ahl Family
- Security Financial Bank

LEADERS CIRCLE (\$15,000 & up)

LEGENDS CIRCLE (20,000 & up)

- Bill Millis Family
- Dr. Kirk Lane Family

FOUNDERS CIRCLE (\$30,000 & up)

- Tim & Kay Finch Foundation

Thank you for giving!

* WELCOME 1st time Friends!

DONATIONS TO THE FOUNDATION GIVEN IN GIL'S HONOR

- Ackerson, Marilyn
- Arndt, William
- Baker, Mona
- Brauner, Mike
- Button, Larry & Georgia
- Chown, Brad & Lori
- Coldwell Banker River Valley Realtors
- Corey, Gary & Lois
- Curtis, Mary
- Danielson, Ron
- Diehn, Dan & Heather
- Dougherty, Carol (Jim)
- Dougherty, Mike & Cindy
- Epstein, Mr. & Mrs. David
- Finch, Tim & Kay
- Franke, Clarice
- Galston, Don
- Hansen, Judith
- Hansen, Mary
- Hanson, Michael & Kristi

- Haugen, Carol
- Herrmann, Carl
- Herzberg, Bill & Bee
- Herzberg, Troy & Elizabeth
- Higgins, Jill
- Hilliker, Mark K.
- Hoagenson, John & Delone
- Hoefler, Alden
- Hoffman, David & Marilyn
- Hoffman, Peter & Jone
- Homstad, Ann
- Homstad, Eric
- Homstad, Jon & Maureen
- Homstad, Richard & Eileen Barrett
- Howard, John & Nancy
- Howard, Mary Alice
- Jacobs, Peter
- Jankowich, Raymond & Karen
- Kaphengst, Jim & Jill
- Kertis, Jim & Jeanette

- Kitowski Family, Dr. Nicholas
- Kral, Gerald & Leslie Nightingale
- Krohn, Dr. Eugene & Janet
- Krohn, Joel & Janelle
- Laabs, Nancy
- Lahmayer, Al & Jeanette
- Lahmayer, Bruce & Barb
- Lane Family, Dr. Kirk
- Mack, Dave & Mary
- Martin, Dr. Carol
- McDonald, Heather & Brian
- Millis, Mike & Jana
- Mills, Carla
- Murray, Barry & Julie
- Musser, Nyla
- Norgaard, John & Jane
- Northern Family Farms,
The Ahl Family
- Ostby, Ronald & Bonnie
- Overman, Jerry & Lynda

- Perry, Mary
- Polzin, Jeff & Susan
- Potter, Bill & Kathy
- Potter, Gary
- Potter, James
- Ransom, Gene & Judy
- Ransom, Ray
- Richards, Dennis
- Ripp Distributing
- Ripp, Paul & Theresa
- Rozmenoski, Danny & Mary Jo
- Severson, Margaret
- Stuart, Marion
- Tamminen, Glen & Jean
- Trebatoski, Alex H.
- Van Gorden, Mary
- White-Jacobs, Mary Beth
- Wiste, Roger
- Young, Dennis & Alice

A sincere and heartfelt thank you to all of those making donations to the Foundation in Gil's Honor.